



Criminal and Civil Justice Appropriations Committee

Thursday, February 18, 2010

9:00 AM – 11:00 PM

102 HOB - Reed Hall

Action Packet

**Larry Cretul
Speaker**

**Sandra Adams
Chair**

COMMITTEE MEETING REPORT
Criminal & Civil Justice Appropriations Committee

2/18/2010 9:00:00AM

Location: Reed Hall (102 HOB)

Summary: No Bills Considered

Committee meeting was reported out: Thursday, February 18, 2010 11:45:54AM

COMMITTEE MEETING REPORT
Criminal & Civil Justice Appropriations Committee

2/18/2010 9:00:00AM

Location: Reed Hall (102 HOB)

Attendance:

	<i>Present</i>	<i>Absent</i>	<i>Excused</i>
Sandra Adams (Chair)	X		
Eric Eisnaugle	X		
Bill Heller	X		
Doug Holder	X		
Paige Kreegel	X		
Charles McBurney	X		
Juan-Carlos Planas			X
Ari Porth	X		
Darryl Rouson	X		
William Snyder	X		
Darren Soto	X		
Perry Thurston	X		
John Tobia	X		
Juan Zapata			X
Totals:	12	0	2

Committee meeting was reported out: Thursday, February 18, 2010 11:45:54AM

COMMITTEE MEETING REPORT
Criminal & Civil Justice Appropriations Committee

2/18/2010 9:00:00AM

Location: Reed Hall (102 HOB)

Other Business Appearance:

Food Services

John Varnado, President (General Public) - Information Only

Trinity Services

380 Scarlet Blvd.

Oldsmar Florida 34677

Phone: 813-854-4264

Food Services

Byron C Russell, CEO (General Public) - Proponent

Cheney Bros. Inc

One Cheney Way

Riviera Beach Florida 33404

Phone: 561-845-4702

Food Services and Bed Utilization

Richard Prudom, Dir of Financial Mgt. (State Employee) (At Request Of Chair) - Information Only

Department of Corrections

2601 Blair Stone Road

Tallahassee Florida 32301

Substance Abuse Treatment Ctr

Mark Fontaine, Executive Director (Lobbyist) - Information Only

Florida Alcohol & Drug Abuse Association

2868 Mahan Drive

Tallahassee Florida 32308

Phone: 850-878-2196

Substance Abuse Treatment Ctr

Susan Nyamora, Case Manager (General Public) - Information Only

Susan B Anthony Center

6744 SW 195th Avenue

Pembroke Pines Florida 33332

Phone: 954-733-6068

Committee meeting was reported out: Thursday, February 18, 2010 11:45:54AM

The various facilities comprising the 2009B&C Project will be located on land leased from the State pursuant to individual Ground Leases, which will each have a term at least as long as the final maturity of the Series 2009B&C Certificates.

Florida Prison System Facilities Comprising the 2009B&C Project

<u>Facility</u>	<u>Security Level</u>	<u>Construction Method¹</u>	<u>Operator</u>	<u>Beds</u>	<u>Completion Date</u>	<u>Financing Cost</u>
Mayo Correctional Institute-Annex	Medium/Close	CM/IL	FDOC	1,335	May 2010	\$42,900,000
Suwannee Correctional Institute-Annex	Medium/Close	CM/IL	FDOC	1,335	November 2010	26,866,902
Lowell Reception Center	Medium/Close	CM/IL	FDOC	1,335	September 2011	92,016,580
Lancaster Secure Housing Unit	Medium	CM/IL	FDOC	240	July 2010	16,509,194
Okeechobee Work Camp	Minimum/Medium	CM/IL	FDOC	432	June 2010	14,241,033
Liberty Work Camp	Minimum/Medium	Contract/IL	FDOC	432	May 2011	9,363,951
Santa Rosa Work Camp	Minimum/Medium	Contract/IL	FDOC	432	March 2011	8,426,930
Franklin Work Camp	Minimum/Medium	Contract/IL	FDOC	432	June 2011	9,391,871
Cross City Work Camp	Minimum/Medium	Contract/IL	FDOC	432	July 2011	9,465,071
New River Work Camp	Minimum/Medium	Contract/IL	FDOC	432	September 2011	9,767,602
Hollywood Work Release Center	Minimum	CM/Contract	FDOC	150	December 2010	4,589,910
Kissimmee Work Release Center	Minimum	CM/Contract	FDOC	150	December 2010	4,589,910
Lake City Work Release Center	Minimum	CM/Contract	FDOC	150	October 2010	4,589,910
Santa Fe Work Release Center	Minimum	CM/Contract	FDOC	150	October 2010	4,589,910
Everglades Re-entry Center	Minimum/Medium	Contract/IL	FDOC	288	December 2010	15,048,561
Baker Re-entry Center	Minimum/Medium	Contract/IL	FDOC	432	September 2011	16,801,021
Pat Thomas Re-Entry Center	Minimum/Medium	Contract/IL	FDOC	576	February 2012	19,980,918
Total				<u>8,733</u>		<u>\$309,139,274</u>

¹ The construction methods used by the FDOC are construction management (CM), construction by contract (Contract), and use of inmate labor (IL).

Source: Florida Department of Corrections.

Mayo Correctional Institution Annex – The Mayo Correctional Institution Annex Project consists of the construction and equipping of a 1,335 bed annex at the existing Mayo Correctional Institution to house medium and close custody male adults. The Mayo Correctional Institution, which has a current maximum capacity of 1,343, is located near Mayo in Lafayette County, Florida. The annex will be located on approximately 55 acres of land, and include six open bay dormitories, two secure housing units and related facilities. The project will also include improvements to certain existing structures and utilities to accommodate the increased number of inmates.

The Mayo Annex Project will be built using construction management and inmate labor construction, with construction expected to be completed by May 2010. The cost of financing the construction and equipping of the facility is expected to be approximately \$42,900,000, of which \$7,729,043 is expected to be used to construct or acquire Series 2009B&C Equipment on land not subject to the 2009B&C Lease.

Suwannee Correctional Institution Annex – The Suwannee Correctional Institution Annex Project consists of the construction and equipping of a 1,335 bed annex at the existing Suwannee Correctional Institution to house medium and close custody male adults. The Suwannee Correctional Institution, which has a current maximum capacity of 1,521 is located near Live Oak in Suwannee County, Florida. The annex will be located on approximately 55 acres of land, and include six open bay dormitories, two secure housing units and related facilities.

Florida Department of Corrections Trinity Services Group's Rebuttal to Secretary McNeil's Report

1. DOC states that they serve 84% of inmate populations. They state that previous contractors served 80% of population. While operating Region II, Trinity Services Group consistently served between 89% for the calendar year.
2. The mop and bucket story is not the entire story. Chemicals, swill, grease traps are not in the food service budget currently. The cost of these items/maintenance represented \$ 800,000 per year to Trinity Services Group in Region II.
3. The costs associated with the mandated menu Trinity Services Group served while in Region II was \$.80 per tray. If Trinity had to run the current menu the per tray cost would be \$.52. The variables would be if we used our current supplier and have the same liberties of substituting items such as vegetables when the item is temporarily cost prohibitive.
4. We were required to serve beef and were not allowed to utilize turkey and soy based products. The Department is currently using soy-added products and turkey items rather than beef. Some products served are 100% soy based.
5. The food products received from the farms were being charged to Trinity. These items are not currently being charged to the Department. This represents a value of \$ 250,000 annually to Region II alone.
6. MINS incidents reports were presented to Trinity so frequently that we had to continuously provide remedial corrective action reports. MINS incident reports are now virtually non-existent. Is the food service suddenly so superior or is the Department not holding itself to the standards expected from Trinity? (*Why would they write themselves up?*)
7. The Department does not charge Litigated Damages to itself.
8. The Culinary Arts Program was initiated by Trinity and Pride. The program was about to be launched when the Department terminated the contract with Trinity.
9. We understand the vocational instructor position is frequently 30 to 50 positions short. The current fill time is 3 to 8 weeks reaping huge savings to the Department with the slots left open for extended periods of time.
10. Food Service Directors are taking 3 to 6 weeks to fill vacant positions. Contractors were contractually obligated to fill vacant positions within 48 hours. Once again, this represents large labor savings to the Department.
11. 60 % of the food service staff are working without benefits. Trinity offered all of its associates health, dental, life, short and long term insurance as well as other benefits.
12. An example of the US Foods pricing can be seen clearly with its turkey products. US Foods charges the Department \$.67 per pound for 50% turkey and 50% soy, when Trinity pays its supplier \$.51 for 100% ground turkey.
13. Trinity has learned that an extra security guard is needed in 20% of the units. This additional cost of labor is not being charged to food service.

- 14.** Trinity has also learned that night time clean up duties are happening in 15% of the facilities, The remaining facilities have assigned the clean up duties to the security staff and is not being charged to food services.
- 15.** It is evident that the Department is not supervising the contract terms with US Foods (i.e. product quality, delivery to each facility once per week and pricing).
- 16.** Trinity would love to bid the Department's food service operation provided we were allowed all the same liberties that the Department has been employing since it resumed responsibilities for the food services. This would clearly be an "apples to apples" comparison of the costs surrounding the food service operation and show what savings could have been realized had the Department listened when Trinity tried to convince them to change the business model.
- 17.** The report presented by Secretary McNeil is a clear case of "apples to oranges"!

Correctional Substance Abuse Programming

Number of Research Studies that Validate Treatment Works for Offenders – 27
(Reduces crime, increases public safety, reduces recidivism, maintains order)

Percentage of DOC Budget Spent on Drug Treatment – Less Than 2%

Number of Inmates – 101,175

Number of Inmates in Need of Substance Abuse Treatment – 65,764

Number Treated FY 2008-2009 – 4,900

Number Released FY 2008-2009, Needing Treatment Who Did Not Get It – 22,722 (84%)

Normal Inmate Recidivism – 32.8% within 3 Years, 44% within 5 years

2 Years after Release, 81% of Program Completers Did Not Return to Prison for a New Offense

If All Offenders that Needed Treatment Received It,
769 Fewer Inmates Would Return to Prison at Savings of \$35.9 Million
(DOC Figures: 769 fewer return within 36 months X \$55.54 per diem X
2.3 year average sentence avoided = \$35.9 Million)

Number of Probationers – 155,837 (12/31/09)

Number in Need of Substance Abuse Services – 88,827 (57%)

Number Treated FY 2008-2009, in Community Beds – 4,255

36 Months Post Treatment – Completers Return to Prison 56% Less than Those Who Needed
Treatment and Did Not Get It

36 months Post Treatment – 93% of Completers Had No Recommitment to Prison

Cost of Community Treatment Bed to serve One Offender @ \$10,290 vs. Cost of Prison @
\$36,960 (avg. 22 months)

Number of Community Beds: 1986 Beds in 2006 vs. 1073 Beds in 2009 (**45% Reduction**)

Available Beds if \$2 Million NR is not Restored –956 (**51% Reduction**)

Corrections Offender Network



DC Number: L66753
Name: BOXER, SUSAN F
Race: WHITE
Sex: FEMALE
Hair Color: BLACK
Eye Color: BROWN
Height: 5'06"
Weight: 136 lbs.
Birth Date: 10/06/1968
Supervision Begin Date: 10/30/2006
Current Location: FT. LAUDERDALE
Current Status: ACTIVE
Supervision Type: DRUG OFFENDER PROBATION
Scheduled Termination Date: 04/29/2009

Offense Date	Offense	Sentence Date	County	Case No.	Community Supervision Length
07/01/2006	COCAINE - POSSESSION	10/30/2006	BROWARD	0611323	2Y 0M 0D



Reunified
 with all of
 my children
 at the Susan
 B Anthony
 Christmas
 Party
 December
 2007

Susan's Story

Prison Bed vs. Community Drug Treatment Bed Cost Comparison

PRISON BED

**5 year sentence
(1825 days x 85% = 1551 days)**

1551 days x \$74.50 = \$115,550

+

**Foster Care
\$10,000/year x 3.7 years = \$37,000**

VS.

COMMUNITY DRUG TREATMENT BED

210 days x \$49/day = \$10,290

+

Daughter out of Foster Care

+

Reunited with Other 3 Children

+

**Full time Employeed
(Taxes Paid)**

+

AA Degree, on the way to BA

+

Community Service

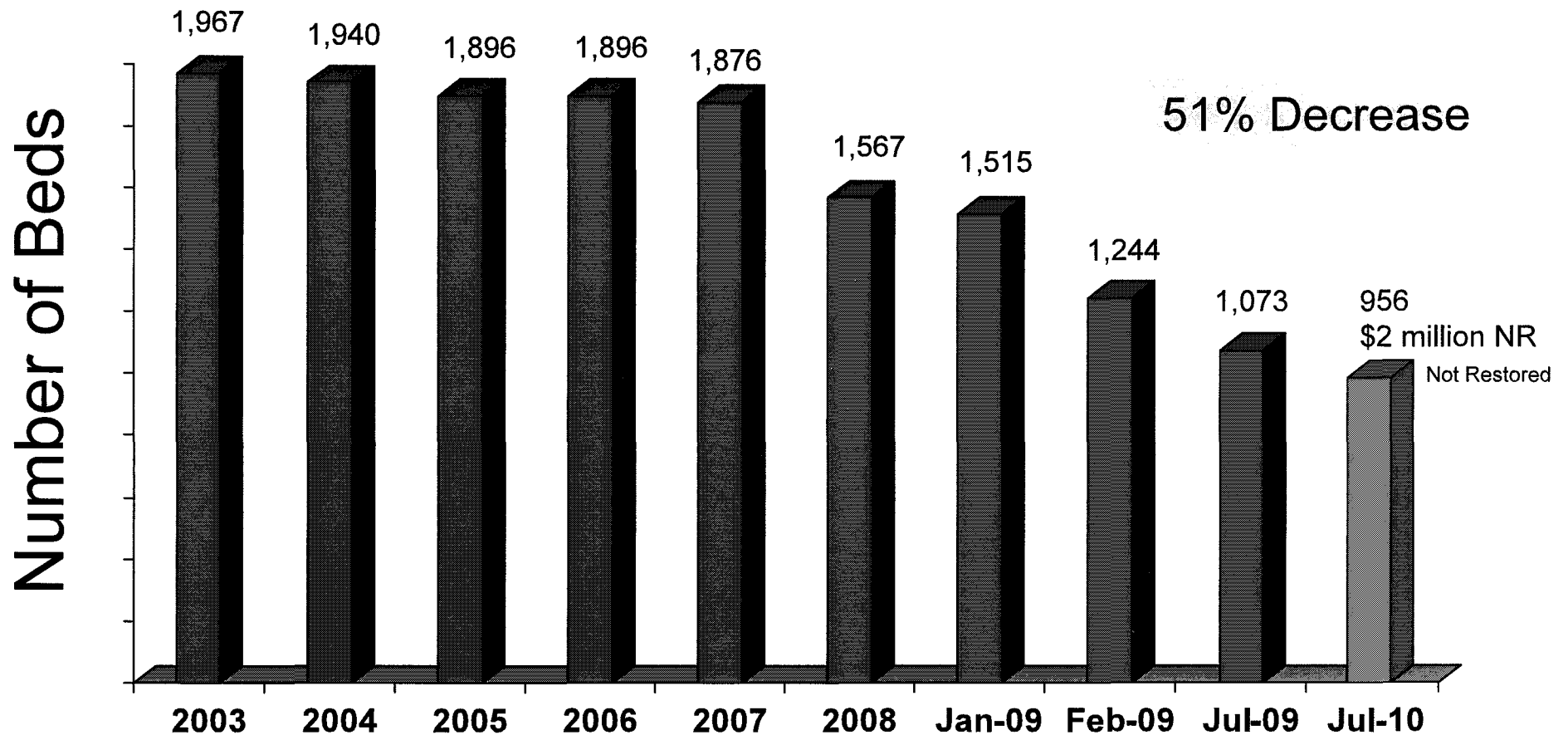
+

Rights Restored

TOTAL = \$152,550

TOTAL = \$10,290

Department of Corrections Community Substance Abuse Beds



Contractor Name	Contract #	FY 2009-10 Funded Beds	FY 2009-10 Contracted Beds	FY 2009-10 Reduced Beds#	Bed Increase (Feb-June 2010)
Better Way of Miami, Inc. (Miami)	C2218	41	24	-17	4
Bridges of America - The Polk Bridge, Inc. (Auburndale)	C2411	85	50	-35	4
Bridges of America, Inc. - The Orlando Bridge (Orlando)	C2120	120	69	-51	3
Bridges of America, Inc. - The Sanford Bridge (Orlando)	C2572	40	22	-18	1
Comprehensive Alcoholism Rehabilitation Prog. (WPB)	C2413	55	32	-23	4
DACCO, Inc. (Tampa)	C2412	150	87	-63	0
DACCO, Inc. (line item - Tampa)	C2577	33	33	0	4
First Step of Sarasota, Inc. (Sarasota)	C2176	10	6	-4	4
First Step of Sarasota, Inc. (Sarasota)	C2566	50	29	-21	4
Goodwill Industries-Suncoast, Inc. (St. Petersburg)	C2410	60	35	-25	0
House of Hope, Inc. (Ft. Lauderdale)	C2414	75	46	-29	4
Non-Secure Programs, Inc. (Ocala)	C2181	75	31	-44	4
Non-Secure Programs, Inc. (Panama City)	C2234	75	45	-30	4
Non-Secure Programs, Inc. (Pensacola)	C2284	60	45	-15	4
Non-Secure Programs, Inc. (Tallahassee)	C2235	70	45	-25	4
Operation PAR, Inc. (Largo)	C2178	166	96	-70	0
Phoenix Houses of Florida, Inc. (Citra)	C2133	214	123	-91	4
Spectrum Programs, Inc. (Miami & Pompano Beach)	C2229	91	61	-30	4
Spectrum Programs, Inc. (Miami)	C2419	40	14	-26	4
Susan B. Anthony Center, Inc. (Pembroke Pines)	C2519	23	14	-9	4
Tampa Crossroads, Inc. (Tampa)	C2285	17	10	-7	4
The Guidance Clinic of the Middle Keys, Inc. (Marathon)	C2546	12	7	-5	4
The Salvation Army - Ft. Myers (Ft. Myers)	C2420	47	27	-20	4
The Salvation Army (Daytona Beach)	C2119	50	29	-21	4
The Salvation Army (Jacksonville)	C2421	60	35	-25	4
WestCare GulfCoast - Florida, Inc. (St. Petersburg)	C2494	100	58	-42	4
TOTAL		1,819	1,073	-746	88

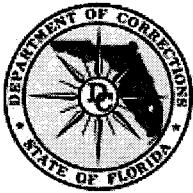
Community Beds Available for Reality House Model Expansion

<u>Provider</u>	<u>Available Beds</u>	<u>Location</u>
Operation PAR	70 Male	St. Petersburg
Spectrum Programs	25 Male	Miami
Transition House	40 Male	Kissimmee
Bridges of America	48 Female	Orlando
Phoenix Programs	70 Male/Female	Ocala
Non-Secure Programs	70 Male	Ocala
Salvation Army	35 Male	_____
Goodwill Industries-Suncoast	35 Male/Female	St. Petersburg
Susan B. Anthony Center	20 Female	Pembroke Pines
Stewart-Marchman-Act	50 Male/Female	Daytona
WestCare-Gulf Coast	<u>70 Male</u>	St. Petersburg

533 TOTAL

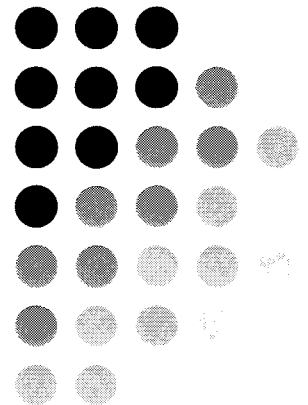
Reality House

**A Community Drug Treatment
Program for Inmates**



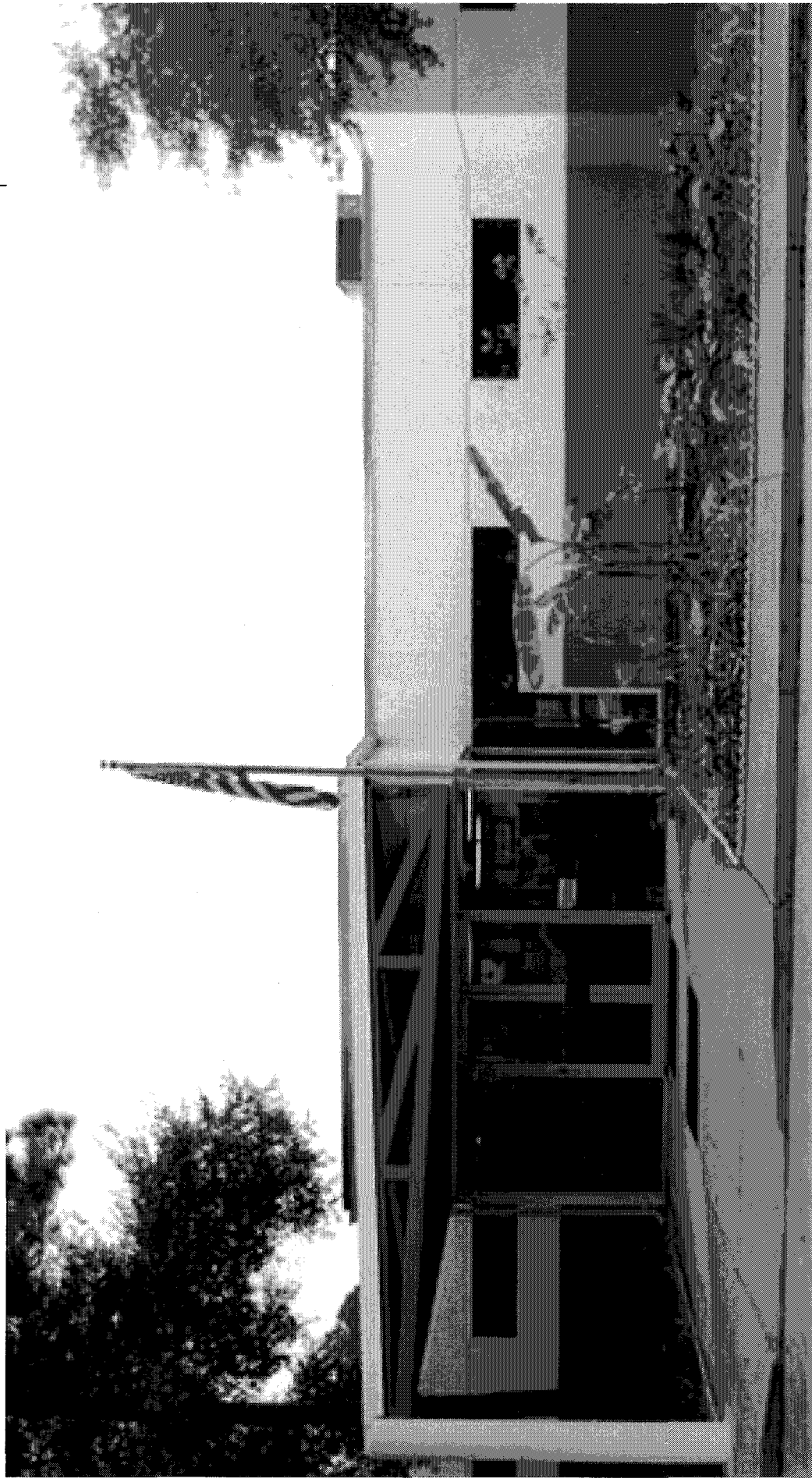
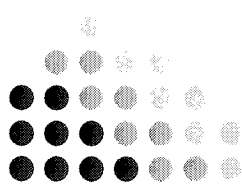
**Florida Department of
Corrections**

STEWART-MARCHMAN-ACT
BEHAVIORAL HEALTHCARE

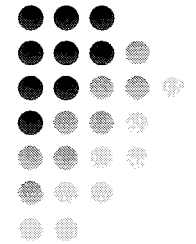


Reality House – Unique in Design and Mission

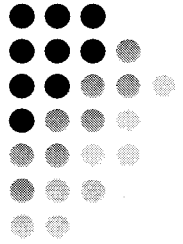
Offering security, treatment, transition



85 Bed Correctional Drug Treatment Program, 28 Bed Work Release Program



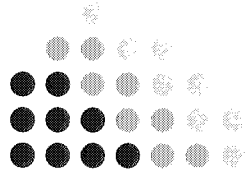
Inmates included in
Tomoka Correctional Institution's bed count



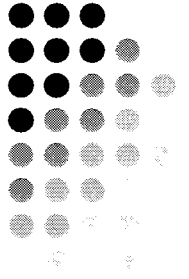
Eligibility for Reality House

- Determined by DOC
- Within 13 months of release
- One or more of the following
 - Drug related conviction
 - Positive drug test while in custody
 - No prior DOC drug treatment
- Work release eligible
 - No escapes or attempts
 - No recent disciplinary reviews
 - Close review of any violent offenses

Morning session brings together all four pods in the house

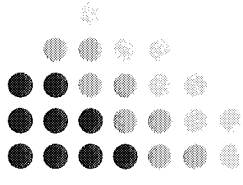


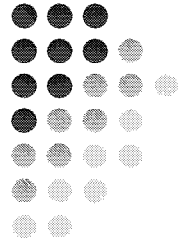
Education & GED Services



- Less than 30% have Diploma or GED
- Volusia Literacy Council provides more than 120 tutoring hours per month
- Daytona State College provides Adult Basic Education classes onsite

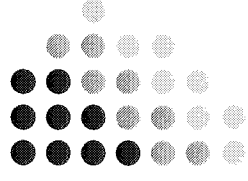
Group and Individual drug
treatment, AA/NA support
occurs daily in each pod



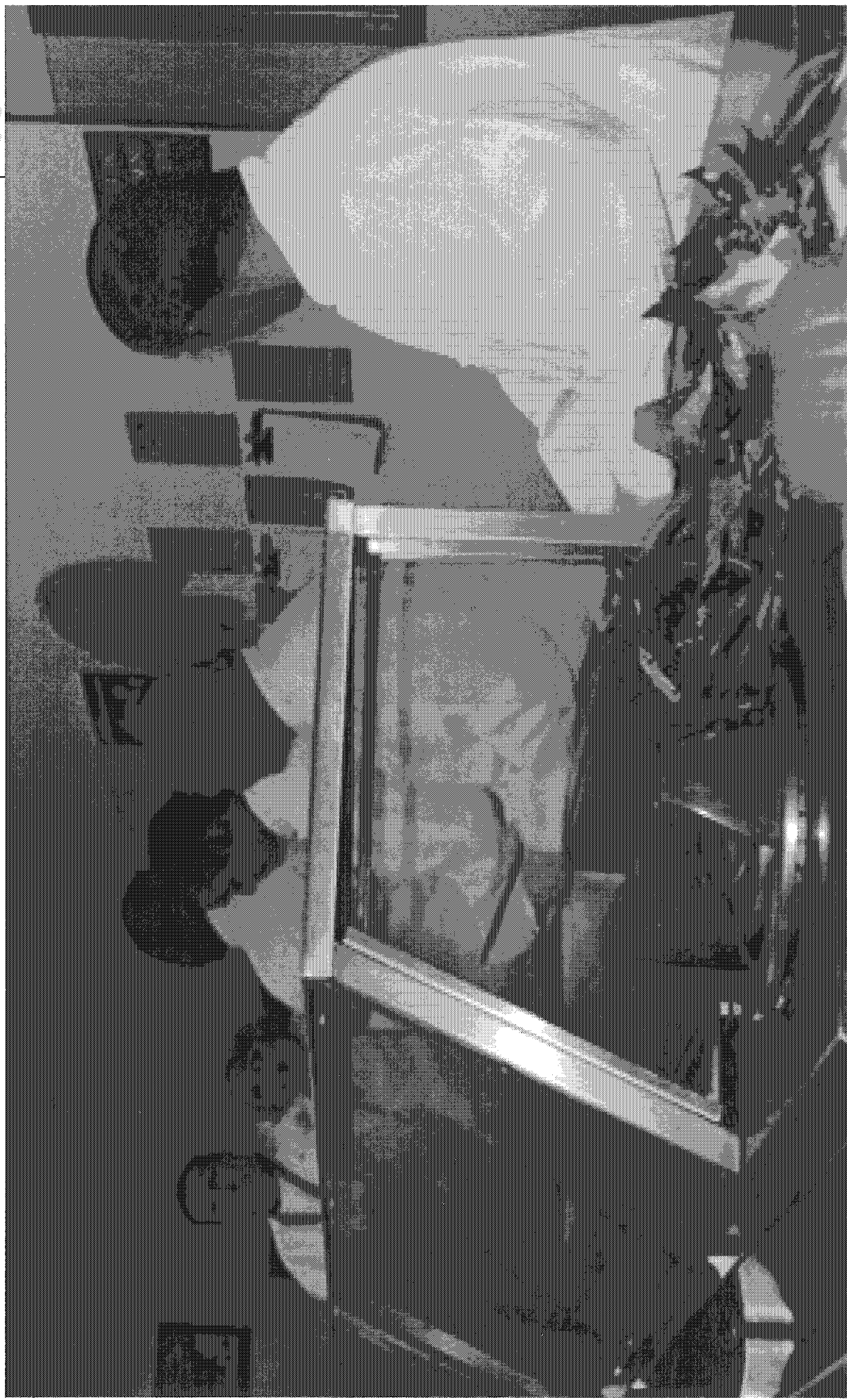
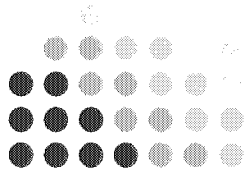


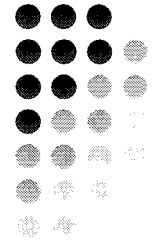
A culinary
arts training
program
prepares
meals for
Reality
House and
neighboring
residential
programs

Culinary arts includes both hands
on and classroom instruction

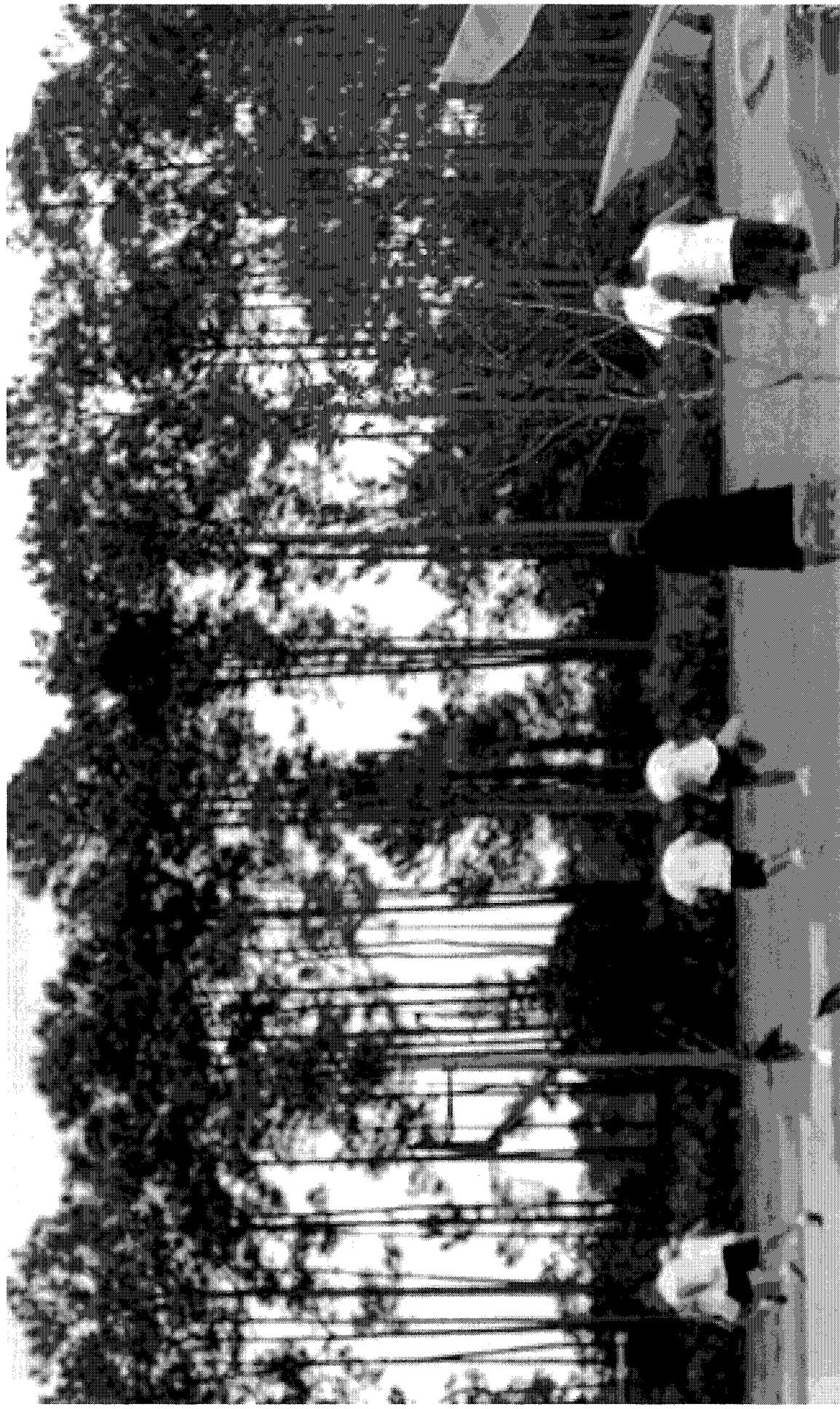


Inmates leave with a food prep certification
that provides them a hiring “leg up”

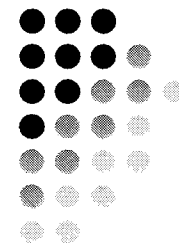




Moral
Reconation
Therapy, an
evidence
based
practice, is
employed
as part of
our core
CBT
curriculum

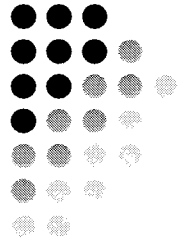


Corrections and accountability without walls – Reality
House includes a focus on health and wellness



Transition Services

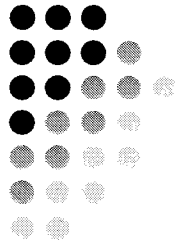
- Work Release
 - 28 beds
 - 90% employment rate averaging \$8.18/hour
- Housing
 - Those without permanent housing linked to transitional housing when released
- Job Skills
 - Culinary arts – 4 certificate courses
- Community support



Results

- 2 year recidivism rates are 11 percent
- 1 overnight “escape” in past year
- No inmate homeless at end of sentence, most placed in permanent housing

Reality House Benefits



- Public safety/corrections directed
- Drug treatment
- Educational and vocational development
- Transition/community engagement - work release, job skills, job placement
- Less expensive than a prison bed
- Increased recovery outcomes
- Reduced recidivism outcomes

1

2

3

4

5

6

7

8

9

10

11

12

13

14

15

16

17

18

19

20

21

22

23

24

25

26

27

28

29