



Health & Family Services Policy Council

Tuesday, November 3, 2009
8:00 AM - 9:45 AM
Webster Hall (212 Knott)

ACTION PACKET

Larry Cretul
Speaker

Ed Homan
Chair

COUNCIL MEETING REPORT
Health & Family Services Policy Council

11/3/2009 8:00:00AM

Location: Webster Hall (212 Knott)

Summary: No Bills Considered

Committee meeting was reported out: Tuesday, November 03, 2009 1:20:22PM

COUNCIL MEETING REPORT
Health & Family Services Policy Council

11/3/2009 8:00:00AM

Location: Webster Hall (212 Knott)

Attendance:

| | <i>Present</i> | <i>Absent</i> | <i>Excused</i> |
|-----------------------|----------------|---------------|----------------|
| Ed Homan (Chair) | X | | |
| Thomas Anderson | X | | |
| Gwyndolen Clarke-Reed | X | | |
| Keith Fitzgerald | X | | |
| Denise Grimsley | X | | |
| D. Alan Hays | X | | |
| Matt Hudson | X | | |
| Kurt Kelly | X | | |
| Paige Kreegel | X | | |
| Ari Porth | X | | |
| Ronald Renuart | X | | |
| Elaine Schwartz | | | X |
| Michael Scionti | X | | |
| Kelly Skidmore | X | | |
| Nicholas Thompson | X | | |
| Juan Zapata | X | | |
| Totals: | 15 | 0 | 1 |

Committee meeting was reported out: Tuesday, November 03, 2009 1:20:22PM

COUNCIL MEETING REPORT
Health & Family Services Policy Council

11/3/2009 8:00:00AM

Location: Webster Hall (212 Knott)

Other Business Appearance:

Encounter Data System

Phil Williams (State Employee) - Information Only
Agency for Health Care Administration
2727 Mahan Drive
Tallahassee Florida 32399-5403

Medical Homes

Peter Miret, President (At Request Of Chair) - Information Only
National Corporate Solutions
5610 SW 196 Lane
Southwest Ranches Florida 33332
Phone: (786) 242-5277

Medical Homes

Andy Behrman, President/CEO (At Request Of Chair) - Information Only
Florida Association of Community Health Centers
2340 Hansen Lane
Tallahassee Florida 32301
Phone: (850) 942-1822

Medical Homes

Paul A. Rothman, President (At Request Of Chair) - Information Only
Prestige Health Choice
9064 NW 13 Terrace
Doral Florida 33172
Phone: (305) 903-0700

Medical Homes

Jeff Lawrence, Chief Financial Officer (At Request Of Chair) - Information Only
MCCI Medical Group
4960 SW 72 Ave., Suite 406
Miami Florida 33155
Phone: (305) 662-5200

Medical Homes

Dan Plasencia, M.D. (At Request Of Chair) - Information Only
St. Joseph's Children's Hospital of Tampa
3001 martin Luther King Blvd.
Tampa Florida 33607
Phone: (813) 712-0434

Medical Homes

Brian Klepper, Ph.D. (At Request Of Chair) - Information Only
Healthcare Performance, Inc.
1949 Brista De Mar Circle
Atlantic Beach Florida 32233
Phone: (904) 343-2921

Committee meeting was reported out: Tuesday, November 03, 2009 1:20:22PM

COUNCIL MEETING REPORT
Health & Family Services Policy Council

11/3/2009 8:00:00AM

Location: Webster Hall (212 Knott)

Medical Homes

Keith Collins, M.D. (General Public) - Information Only

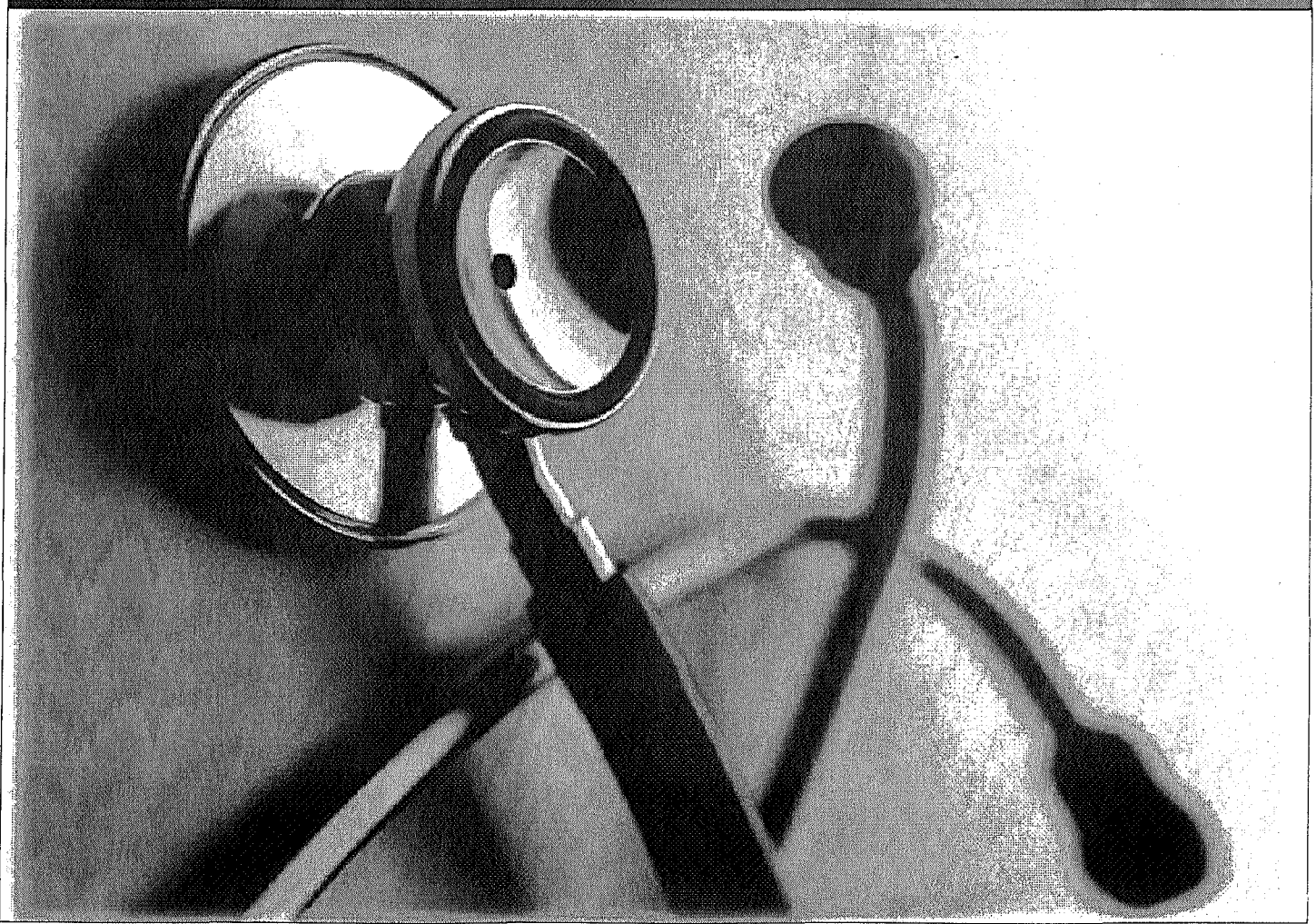
2301 Collins Ave.

Miami Beach Florida

Phone: (954) 294-4074

Committee meeting was reported out: Tuesday, November 03, 2009 1:20:22PM

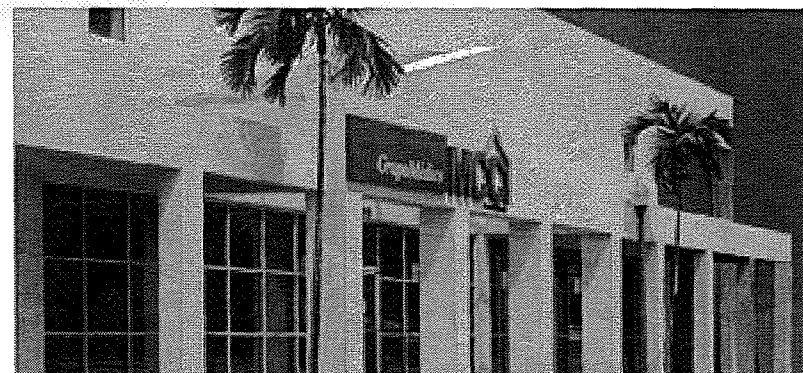
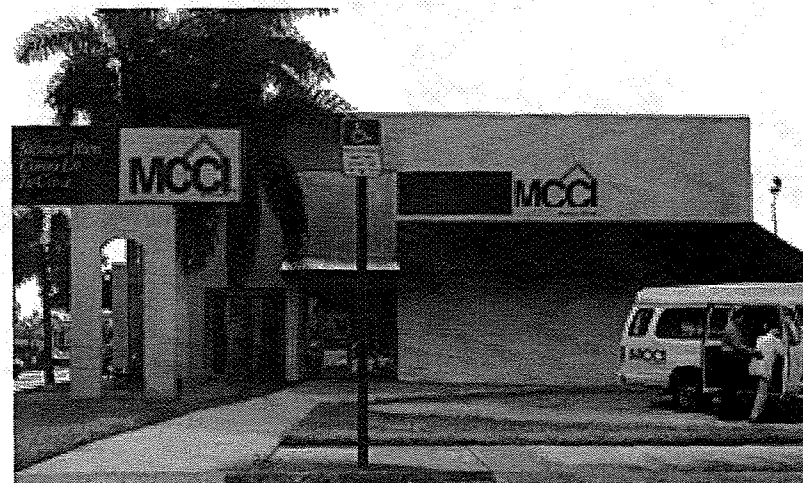
MCCI
Medical Group



Company Overview



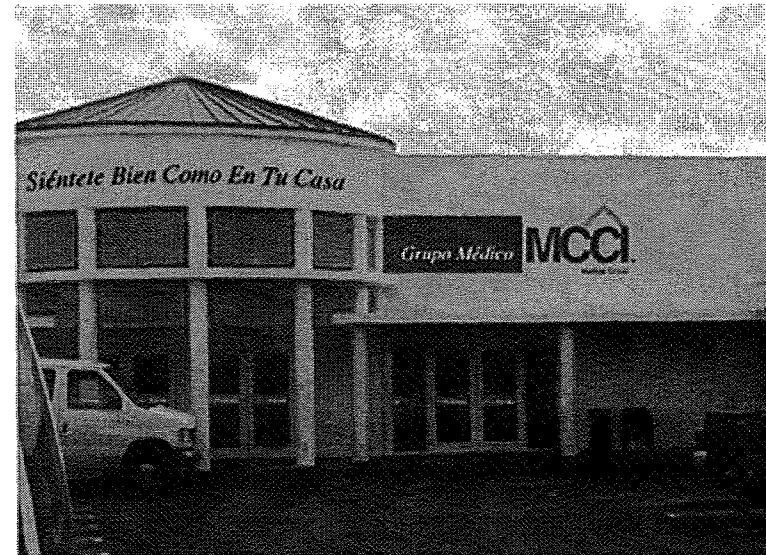
- Headquartered in Miami, Florida
 - Operating since 1988
 - 67 state-of-the-art medical centers in Florida
 - 5,000 to 30,000 square feet
- Medical Resources
 - 173 physicians
 - Over 250 specialists
- Partnerships with Humana, Coventry, and WellCare
 - Provides healthcare services under global risk contracts
 - Approximately 140,000 patients
- In-house urgent care services
- Broad range of full scale medical services on site
- Disease management programs



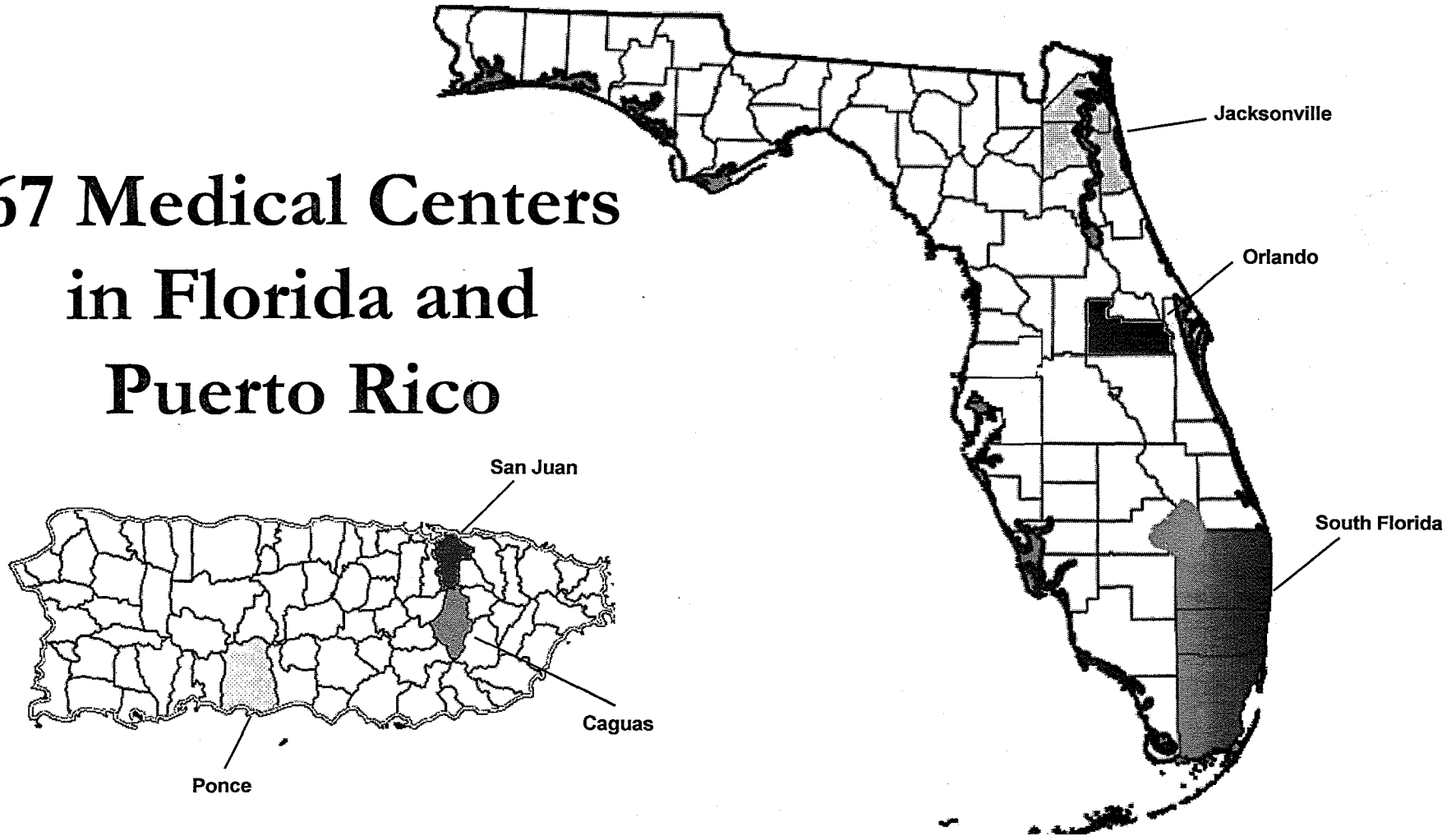
Company Overview



- Pharmacy
 - In-house Pharmacy
 - Mail order capability
 - Home delivery available
- Transportation
 - Fleet of 46 vans
 - Ensures patients meet appointments
 - Free service offered to patients
- Staff per facility:
 - 1 medical director
 - 1 business administrator
 - 1 hospital coordinator
 - 2-3 case managers



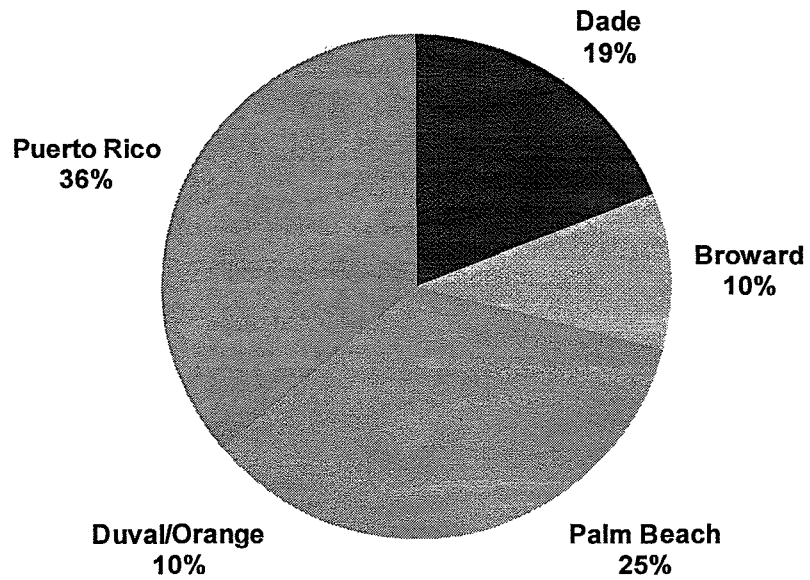
67 Medical Centers in Florida and Puerto Rico



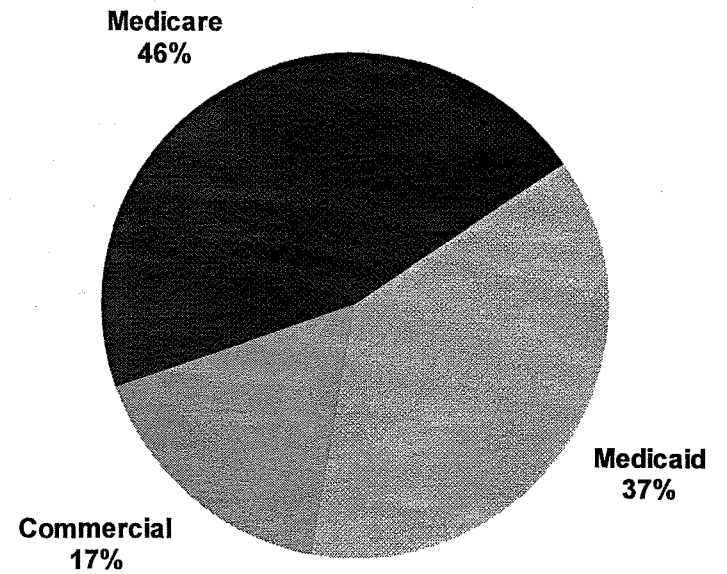
Patient Profile



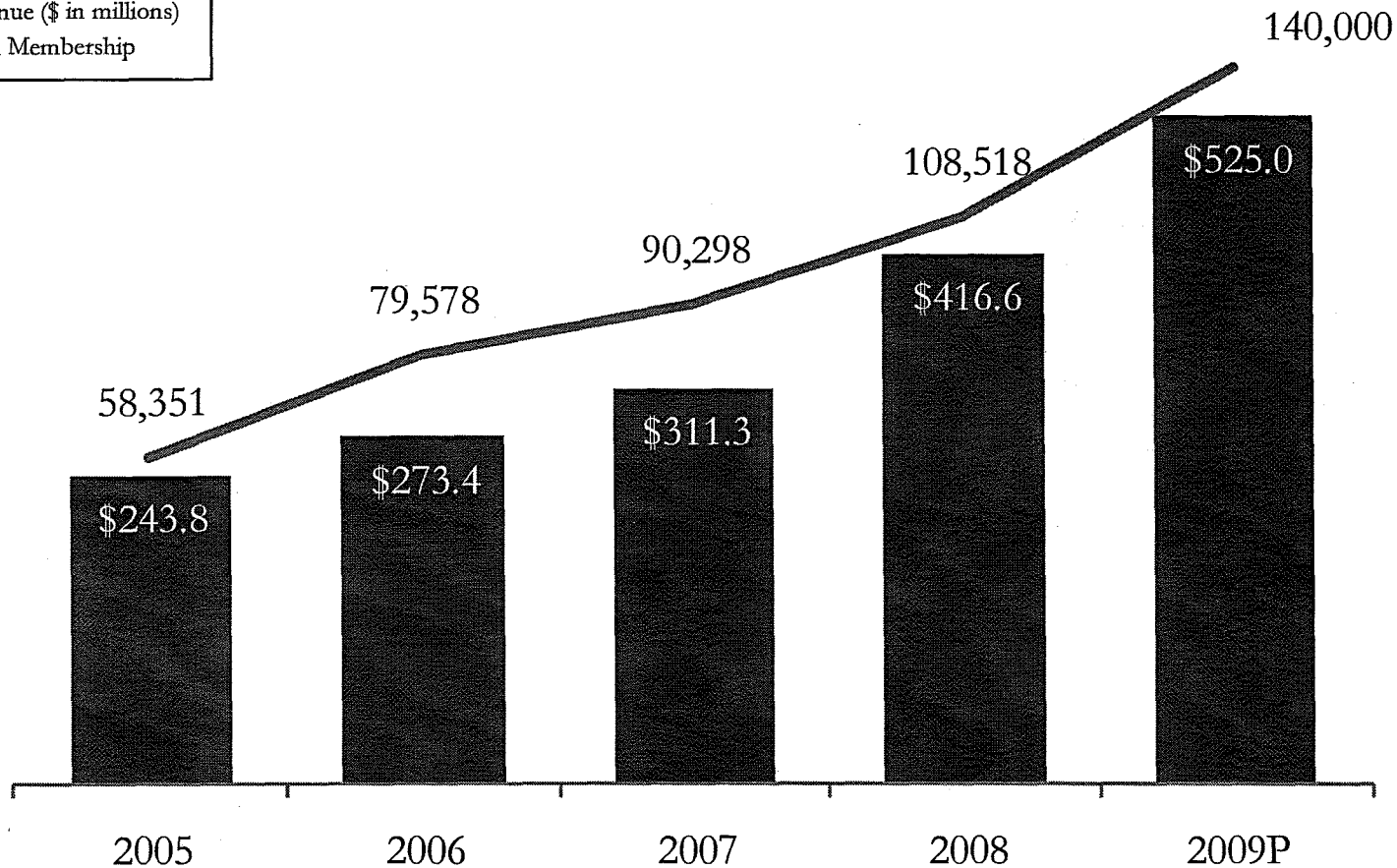
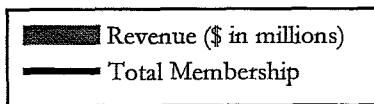
Region



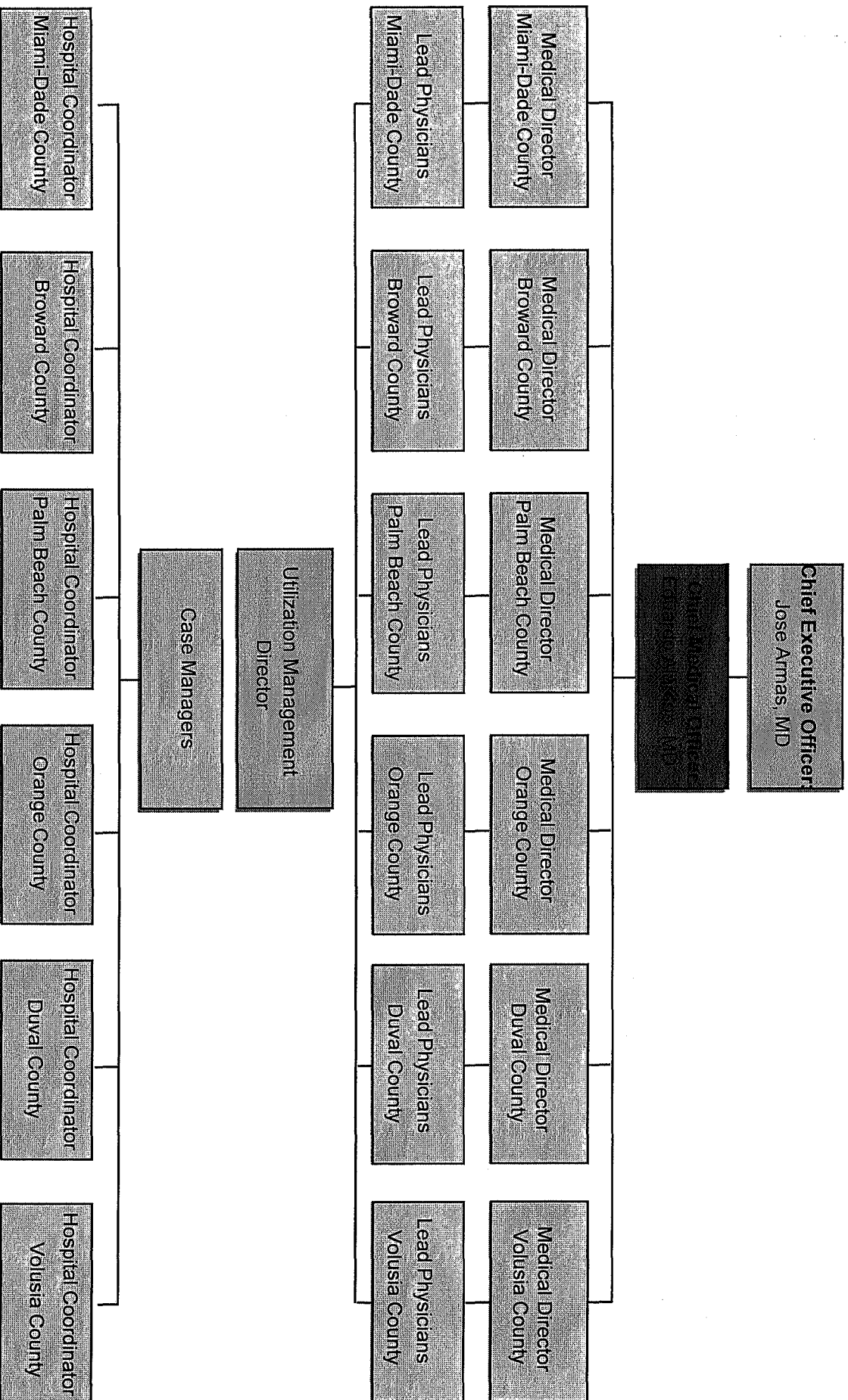
Patient Type



MCCI Patients



Medical Structure



MCCI's Broad Range of Services



Disease Management

Case Management

Hospitalists

Urgent Care

In House/Delivery Pharmacy

Direct Access to Physicians

Direct Access to Specialist

Direct Referral Access

EKG Testing

Pacemaker Check

X-ray Services

Lab Drawing Stations

Dental Services

Eye Care

Internal Medicine

Physical Therapy

Diabetes Education/
Nutrition

Family Health Education

Activity Centers

Transportation Services



Wide Offering of Specialties



Cardiology

Dermatology

Dietician

Endocrinology

Gastroenterology

General Surgery

Gynecology

Nephrology

Ophthalmology

Optometry

Orthopedics

Podiatry

Psychiatry

Rheumatology

Urology

Oncology

Physical Therapy

Wound Care





MCCI Approach

- Patient is seen within 7 days after assigned to physician
- High risk patients may be segregated into an inter-disciplinary approach
 - Disease management
 - Social services
 - Increased frequency of physician-patient interaction
 - Preventive screening (e.g., mammograms)
- MCCI coordinates all referral visits for patients
- One hospital coordinator at every medical center
- Post-hospitalization follow up within 48 hours
- In-house pharmacy in all facilities
- Transportation provided to patients
- Activity centers available

On average, MCCI patients visit their PCP approximately 6–8 times a year, higher than competitor rate

Business Model



- Full risk contracts
- Monthly capitation from federal government
 - Amount based on patient acuity of illness
- Responsible for cost control of:
 - Hospitals
 - Specialists (Acute Care Consultants)
 - Primary Care
 - Pharmacy
 - Home Health (Community Services)
 - Mental Health
 - Other (Ophthalmology, Dentistry, etc.)

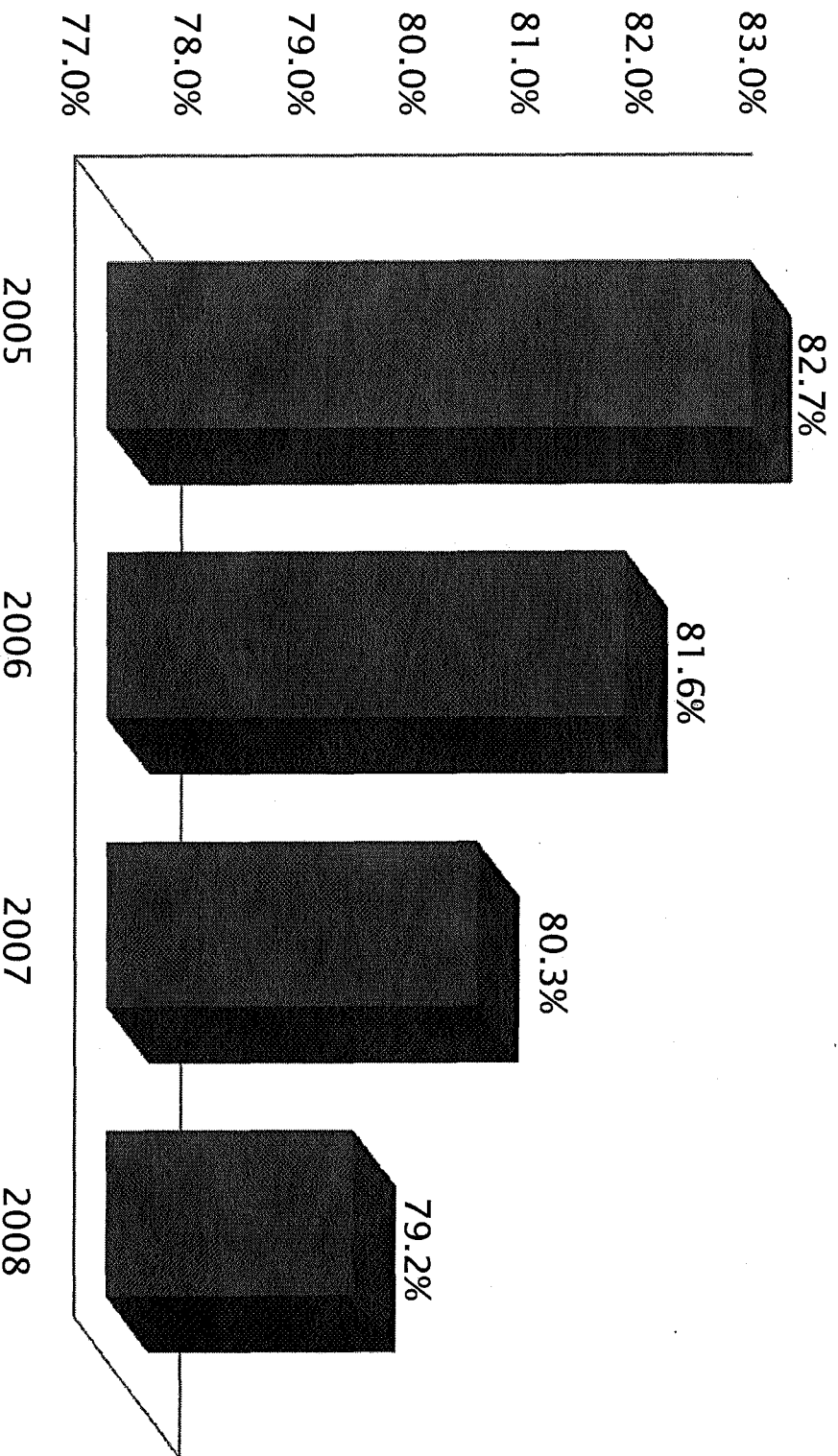
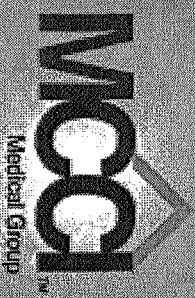


MCCI Clinical Outcomes

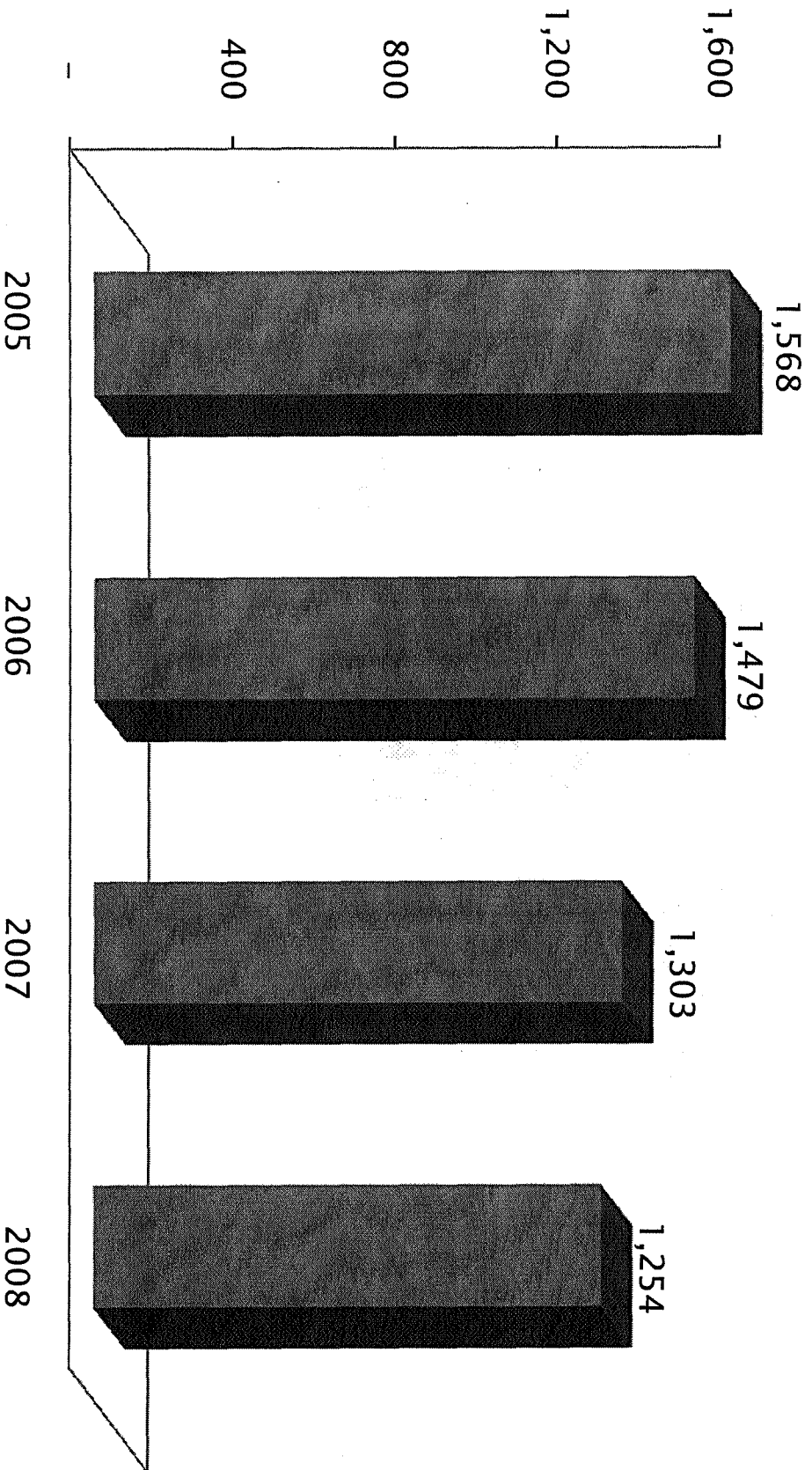
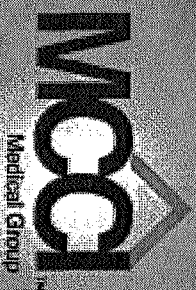


MCCI
Medical Group

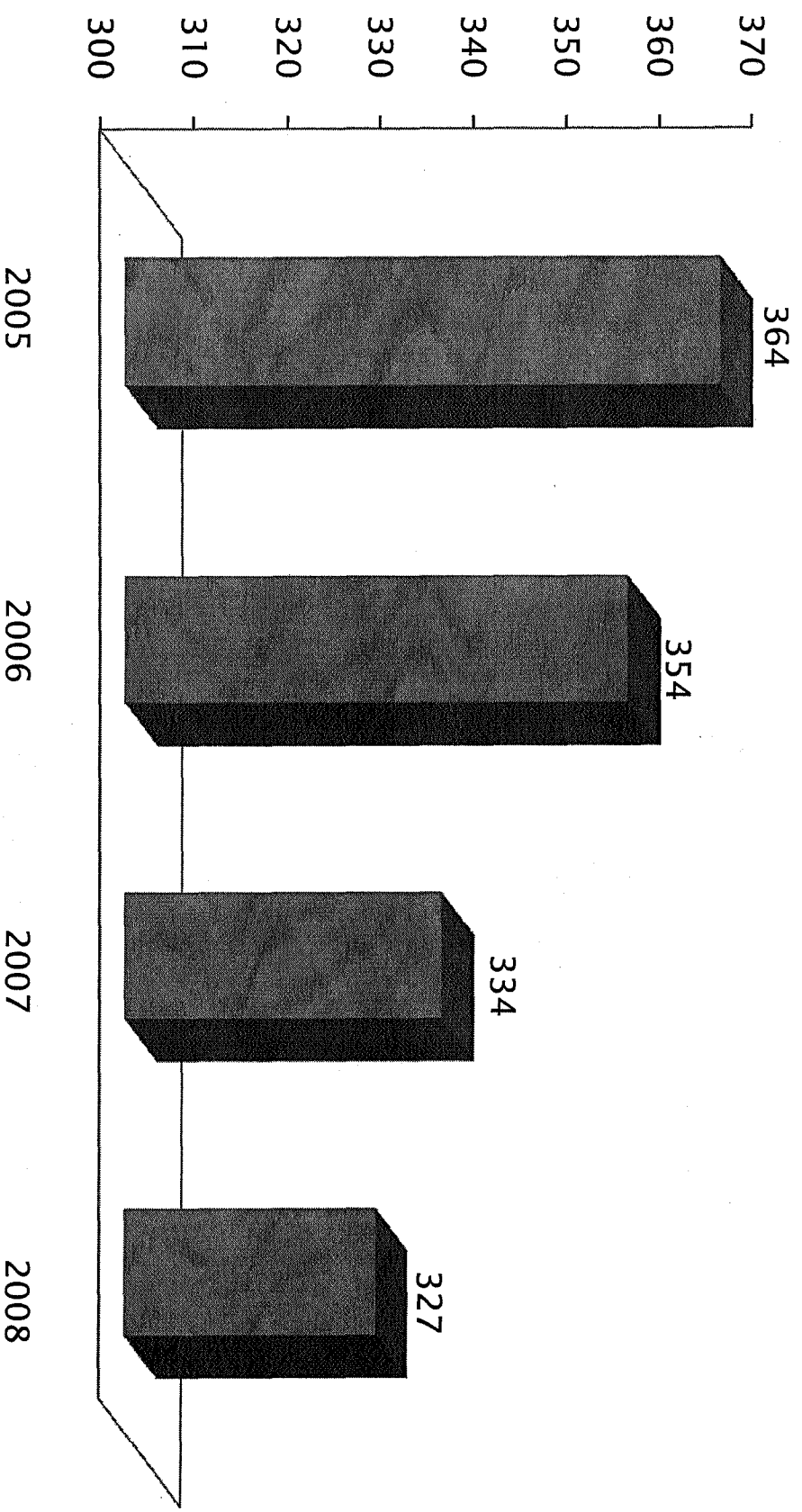
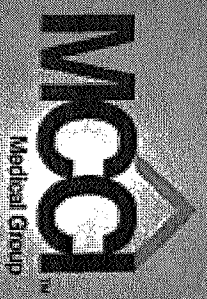
Medical Loss Ratio



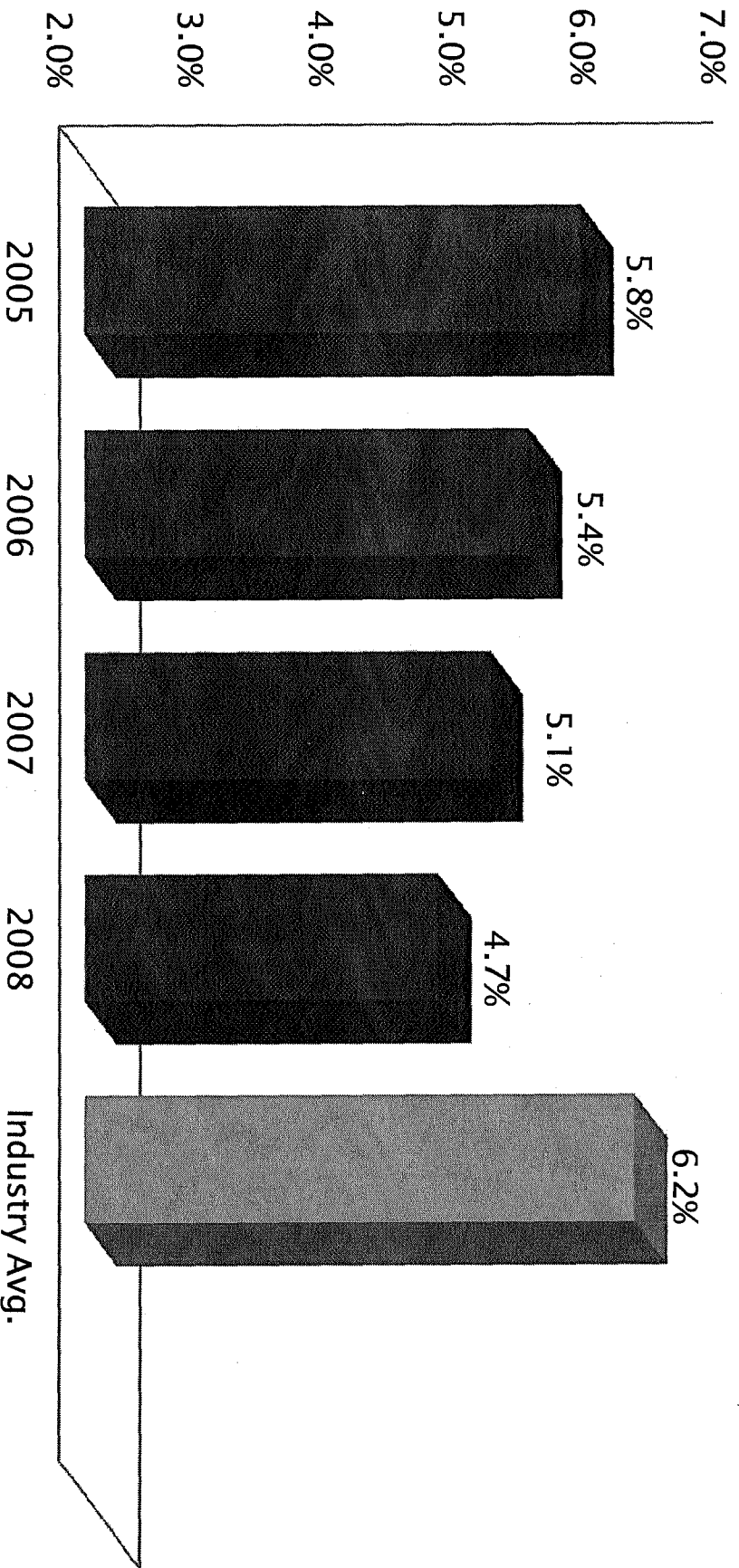
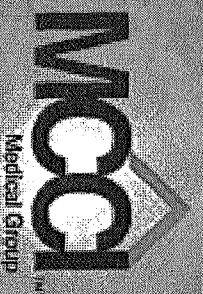
Bed Days per Thousands



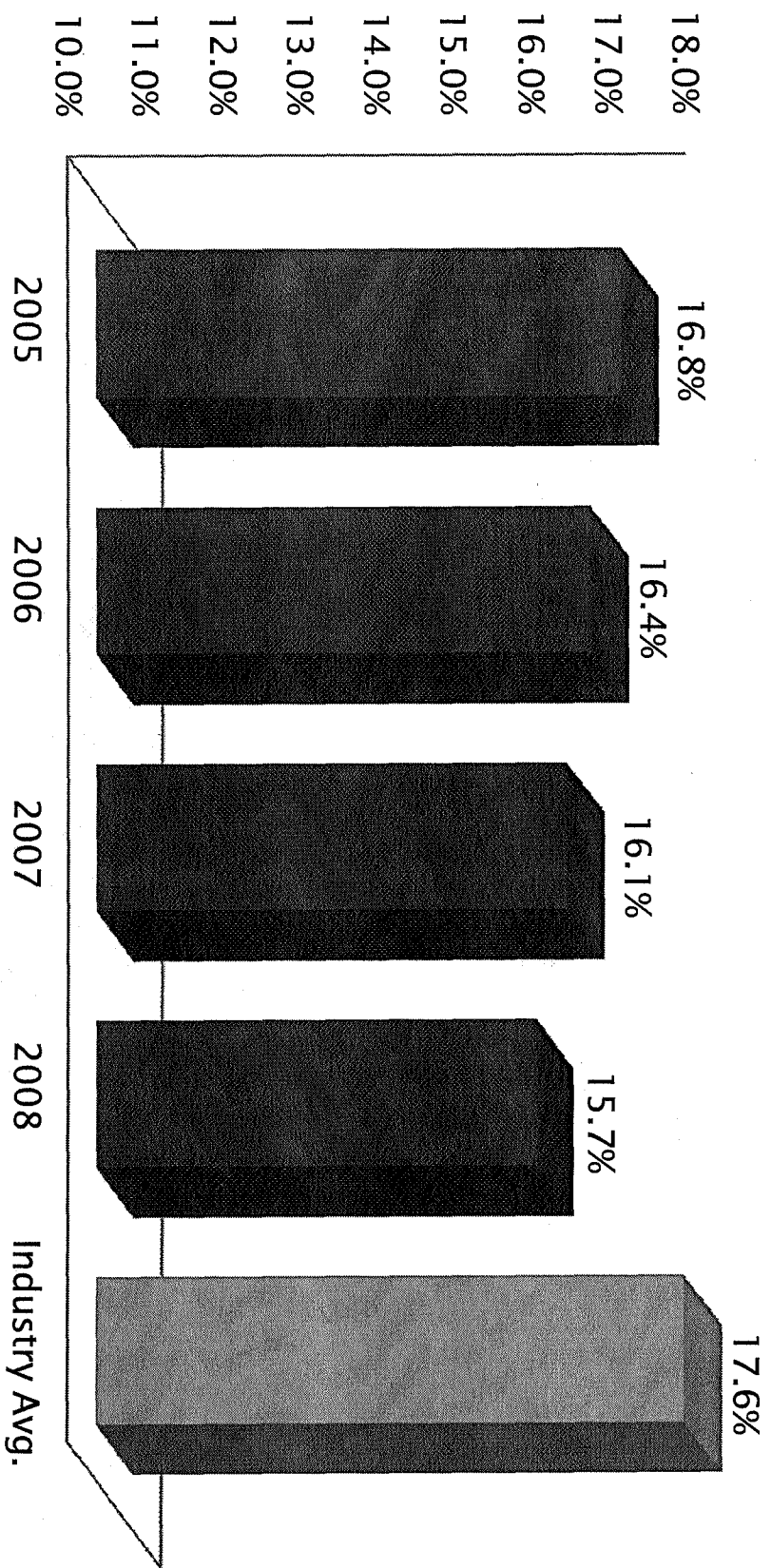
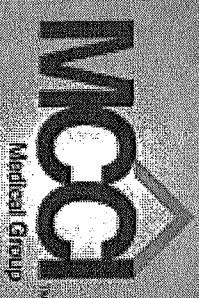
Admissions per Thousands



Re-Admission Rate (7 days or less)



Re-Admission Rate (30 days or less)



Healthcare Business Intelligence at
your fingertips

National Corporate Solutions, Inc.



Company Overview

Healthcare Business Intelligence at
your fingertips

- National Corporate Solutions
 - Healthcare information technology company that provides HMOs, MSO, FQHCs, IPAs and PBMs with the tools and expertise to maximize the financial outcomes of their managed care agreements.
- Headquartered in Miami, Florida
 - Operating since 2001
 - Provides reporting services and data mining for a population of over 160,000

Web Based Solution

- Delivery model requires no hardware, no software
- Flexible allows custom configurations
- Aggregates data from multiple sources into one standard
- User experience - Ease of use shortens the training cycle
- Secure Web Portal
 - Role based HIPAA security
 - Level of access is granted based on user responsibilities

- **Business Intelligence/Data Warehouse**
- **Web-based Analytical Reporting Tool**
- **Drilldown Capability**
- **Highly Scalable**
- **Financial Reporting**
- **Trend Analysis**
- **Clinical Profiling**

- **WELLCARE**
- **HUMANA**
- **VISTA/ COVENTRY**
- **PRESTIGE HEALTH CHOICE (FQHCs)**
- **HUMANA PUERTO RICO (MEDICAID REFORMA)**
- **CAREPLUS**

- HOSPITAL
- PROFESSIONAL/ PHYSICIAN CLAIMS
- PHARMACY
- FINANCIAL
- ENCOUNTER
- REFERRAL
- ACTUARIAL
- REIMBURSEMENT

