



Education Appropriations Subcommittee

Meeting Packet

**October 9, 2013
9:00 a.m. – 11:00 a.m.
Morris Hall**



The Florida House of Representatives
APPROPRIATION COMMITTEE

Education Appropriations Subcommittee

Will Weatherford
Speaker

Erik Fresen
Chair

MEETING AGENDA

Morris Hall
October 9, 2013

- I.** Meeting Called To Order
- II.** Opening Remarks by Chair
- III.** Presentations:
 - A. Dual Enrollment
 - B. Reorganization Plan Required in 2013 HB 7165
 - C. Teacher Salary Increases
- IV.** Closing Remarks
- V.** Meeting Adjourned

Dual Enrollment

House Education Appropriations Subcommittee
October 9, 2013

Matthew Bouck
Office of Articulation
Florida Department of Education

Florida Department of
EDUCATION

Dual Enrollment Background

- Dual enrollment allows eligible students to simultaneously earn credit toward a postsecondary degree and industry certification as well as a high school diploma
- Eligibility Criteria
 - Student in a Florida public or nonpublic secondary school, or home education
 - 3.0 unweighted GPA for college credit courses
 - 2.0 unweighted GPA for non-college-credit career courses
 - College placement test
 - Must maintain a 3.0 unweighted high school GPA and required postsecondary GPA for continued eligibility
- Dual enrollment students are exempt from the payment of tuition, registration, and laboratory fees, and public school students have instructional materials provided free of charge

Dual Enrollment Articulation Agreements

Florida College System institutions and school districts shall develop a dual enrollment articulation agreement (Section 1007.271(21), FS)

- Parent and student information
- Courses and programs available
- Eligibility requirements
- Student monitoring
- Funding

Submitted to the DOE by August 1

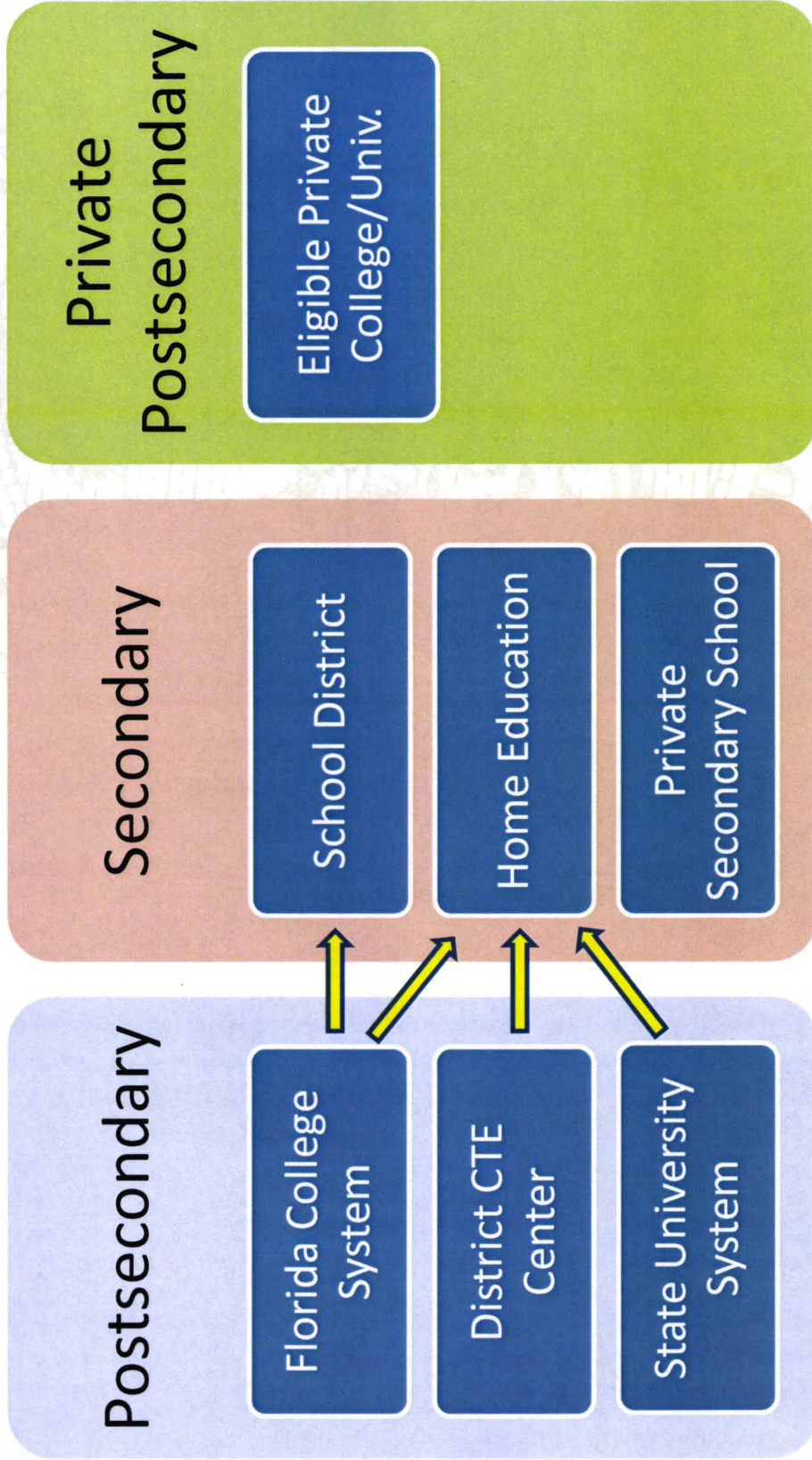
Home Education

Each postsecondary institution shall enter into a home education dual enrollment agreement with students and parents

S. 1007.271(13), FS

Dual Enrollment

Articulation Agreements



Florida Department of
EDUCATION

Required Agreement

What Courses are Dual Enrollment Students Taking?

Most Popular Dual Enrollment Courses	2012-2013 Enrollments
ENC x102 FRESHMAN WRITING ABOUT LITERATURE	10,875
MAC x105 COLLEGE ALGEBRA	4,507
ENC x101 COMPOSITION I	3,545
AMH x020 AMERICAN HISTORY II	3,034
STA x023 HONORS INTRODUCTORY STATISTICS	2,448
PSY x012 GENERAL PSYCHOLOGY	2,079
ECO x013 PRINCIPLES OF MACROECONOMICS	1,872
MAC x114 TRIGONOMETRY	1,799
POS x041 AMERICAN GOVERNMENT AND POLITICS	1,679
MAC x140 PRECALCULUS ALGEBRA	1,552
SLS x103 STRATEGIES FOR SUCCESS IN COLLEGE	1,547

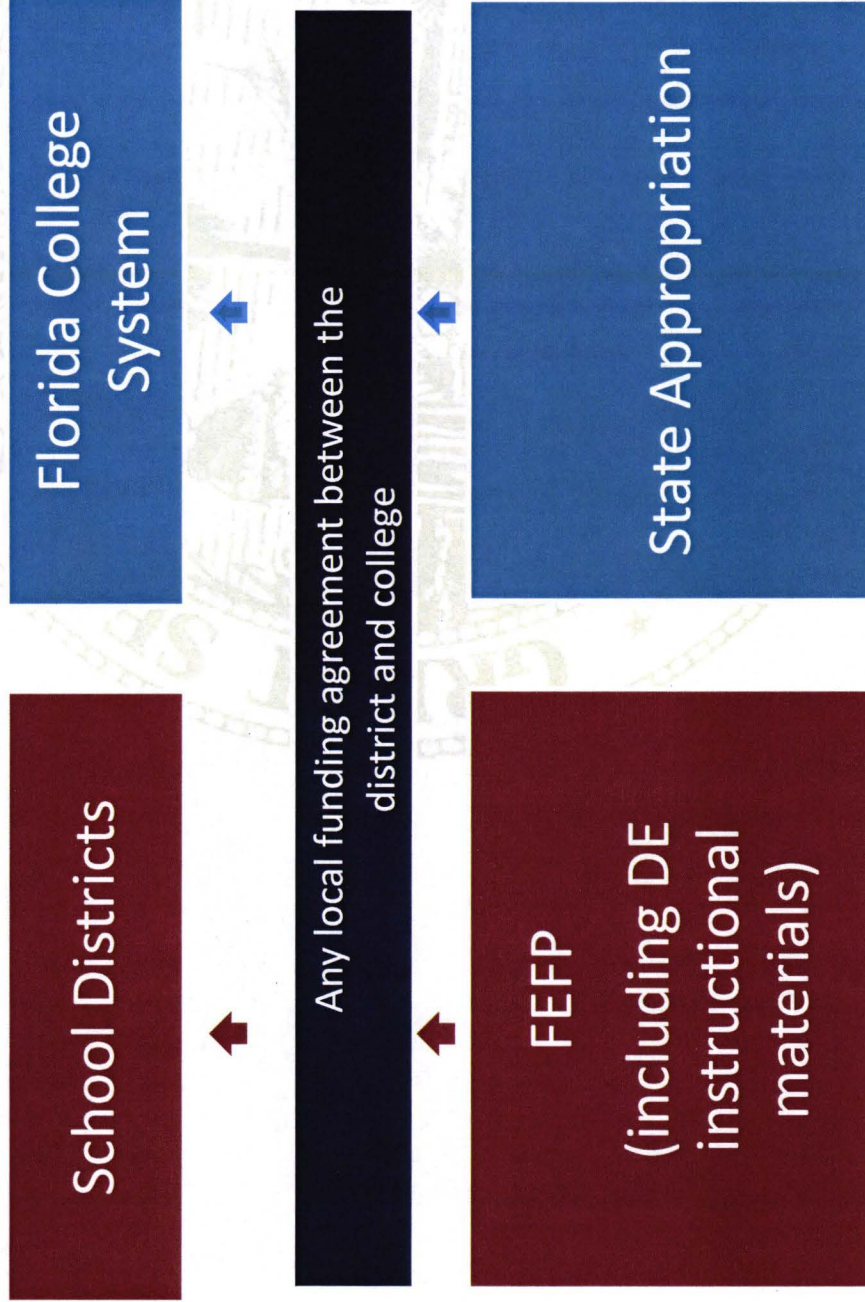
Are Dual Enrollment Students Successful?

- Dual enrollment students in ENC x101 and MAC x105 are more likely than “traditional” students to earn a C or better
- Of those that entered a state university, 91.1% of their grades were a C or better in their first year

Source: A Review of the Florida College Dual Enrollment Program,
Division of Florida Colleges, February, 2010

Dual Enrollment Funding

Prior to 2013-2014



Senate Bill 1514 (2013)

The dual enrollment articulation agreement between the school district and Florida College System institution must include a funding provision that delineates the costs incurred by each entity

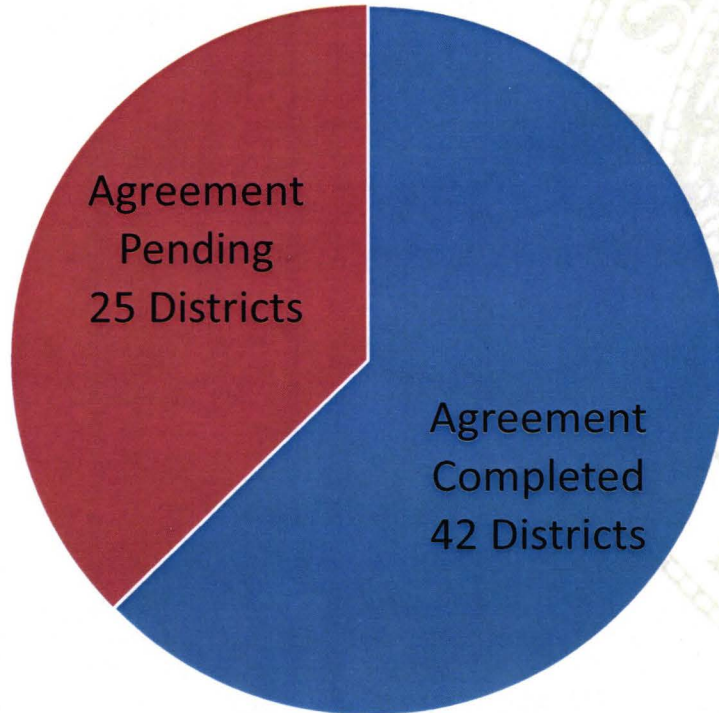
Dual Enrollment Location/Instructor	Dual Enrollment Costs
Florida College System campus	School district shall pay the standard tuition rate per credit hour from FEFP
High School by college faculty	School district shall reimburse the college the costs associated with the proportion of salary and benefits and other actual costs
High school by high school teacher	School district responsible for college's actual costs associated with dual enrollment

Implementation of SB 1514

- For dual enrollment purposes, standard tuition for Florida College System institutions set at \$71.98
- Dual Enrollment FAQ document and articulation agreement template revised to include funding provisions <http://www.fldoe.org/articulation/>
- Florida College System institutions and school districts created or amended 2013-2014 dual enrollment articulation agreements
- DOE staff review agreements for compliance with statutory provisions

Status of 2013-2014 Dual Enrollment Articulation Agreements

Agreements between Florida College System Institutions and School Districts



15 Florida College System institutions have completed all district agreements

23 Florida College System institutions have agreements with private high schools

Observations regarding the 2013-2014 Dual Enrollment Articulation Agreements

- Increase/decrease in dual enrollment
- Summer dual enrollment
- Cost sharing
- Instructional materials
- Clock hour dual enrollment
- Private secondary schools
- Charter schools
- Florida Virtual School



Reorganizing for Excellence in Early Learning

House
Education
Appropriations
Subcommittee

October 9, 2013



OFFICE OF
Early Learning

LEARN EARLY. LEARN FOR LIFE.

Reorganizing for Excellence in Early Learning

Requirement for Report

- Section 31 of House Bill 7165, passed during the 2013 legislative session, required that

By October 1, 2013, the Office of Early Learning, in collaboration with the Commissioner of Education, shall develop a reorganization plan for the office. The plan shall include any changes made prior to July 1, 2013; personnel, purchasing, and budgetary matters and their alignment with the duties and responsibilities of the office; a report of all outstanding contractual obligations; and recommendations for statutory and budgetary changes. The plan shall be provided to the Governor, the President of the Senate, and the Speaker of the House of Representatives.



OFFICE OF

Early Learning

LEARN EARLY. LEARN FOR LIFE.

Reorganizing for Excellence in Early Learning

Office of Early Learning

- Created within the Office of Independent Education and Parental Choice in the Department of Education.
- Fully accountable to the Commissioner of Education but shall independently exercise all powers, duties, and functions prescribed by law and shall not be construed as part of the K-20 education system (Section 1001.213(1), Florida Statutes).



Reorganizing for Excellence in Early Learning

Office of Early Learning

- Lead agency for the administration of state and federal child care funds and partners with 30 Early Learning Coalitions, the Redlands Christian Migrant Association, and others to deliver a comprehensive early learning system of services statewide.
- Responsible for the implementation of the state's School Readiness and Voluntary Prekindergarten (VPK) Education programs.



OFFICE OF
Early Learning

LEARN EARLY. LEARN FOR LIFE.

Reorganizing for Excellence in Early Learning

Interagency Coordination

Office of Early Learning

- Standards
- Accountability
- Support for and Enhancement of Programs
- Professional Development
- Child Enrollment
- Provider Registration
- Coalition Plans
- Coalition Payments
- Monitoring
- Prevention and Detection of Fraud
- Early Learning Advisory Council

Department of Children and Families

- Child Care Referrals
- Background Screening
- Child Care Credentials
- Child Care Licensing
- Gold Seal Accreditation

Department of Economic Opportunity

- Child Care Referrals for School Readiness
- Participant Employment Data for School Readiness

Early Learning Coalitions

School Readiness and VPK Providers



OFFICE OF

Early Learning

LEARN EARLY. LEARN FOR LIFE.

Reorganizing for Excellence in Early Learning

Budget

The Office of Early Learning was appropriated \$1.01 billion for fiscal year 2013-2014. This table displays the 2013-2014 appropriation by program and fund source.

Program	General Revenue	Federal Trust Funds	Total
VPK Program	\$ 404.9 m		\$ 404.9 m
School Readiness Program ¹	\$ 137.0 m	\$ 415.6 m	\$ 552.6 m
Partnership for School Readiness ²	\$ 7.9 m	\$ 23.5 m	\$ 31.4 m
Admin & Support & Other Programs	\$ 7.3 m	\$ 9.1 m	\$ 16.4 m
GAA Total	\$ 557.1 m	\$ 448.2 m	\$ 1,005.3 m
Re-appropriations ³	\$.7 m	\$ 5.3 m	\$ 5.9 m

¹Funding for School Readiness Program to Coalitions (Does not include CCEP or RCMA)

²Partnership for School Readiness includes CCEP, RCMA, TEACH and HIPPI

³Back of the Bill Reappropriation - \$1.5m for ARRA/Even Start, \$4.5 m for Information System



OFFICE OF

Early Learning

LEARN EARLY. LEARN FOR LIFE.

Reorganizing for Excellence in Early Learning

Priorities and Parameters

Priorities

- Transparency, accountability, and quality
- Effective and efficient use of resources

Parameters

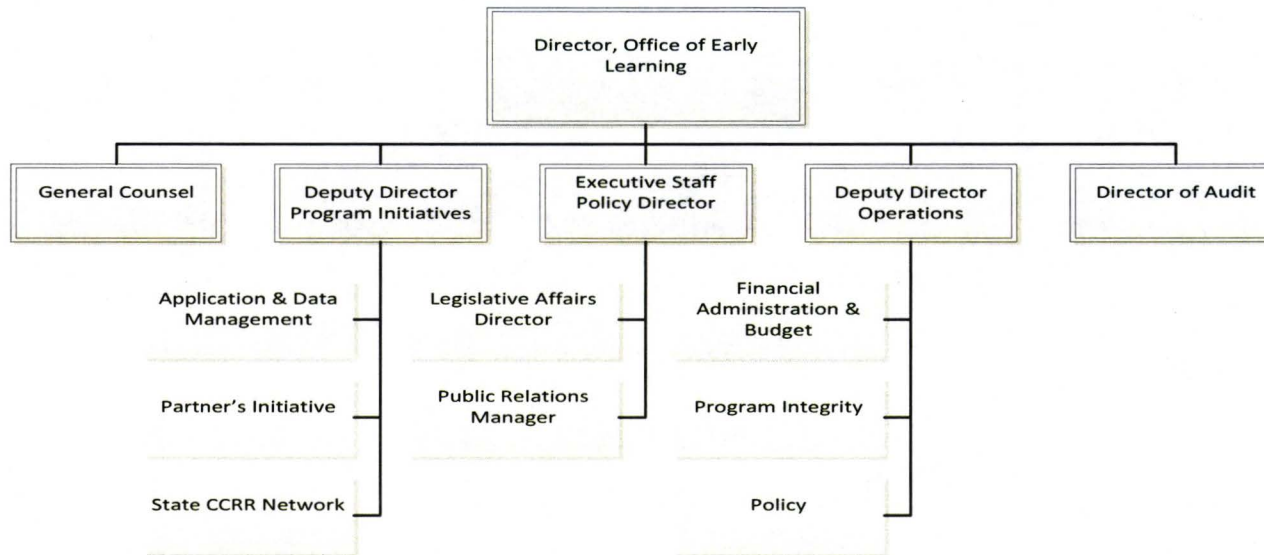
- Consolidate and streamlined reporting structures
- Use existing positions and resources; reduce FTEs, when possible



Reorganizing for Excellence in Early Learning

2012 Organizational Chart

FLORIDA'S OFFICE OF EARLY LEARNING



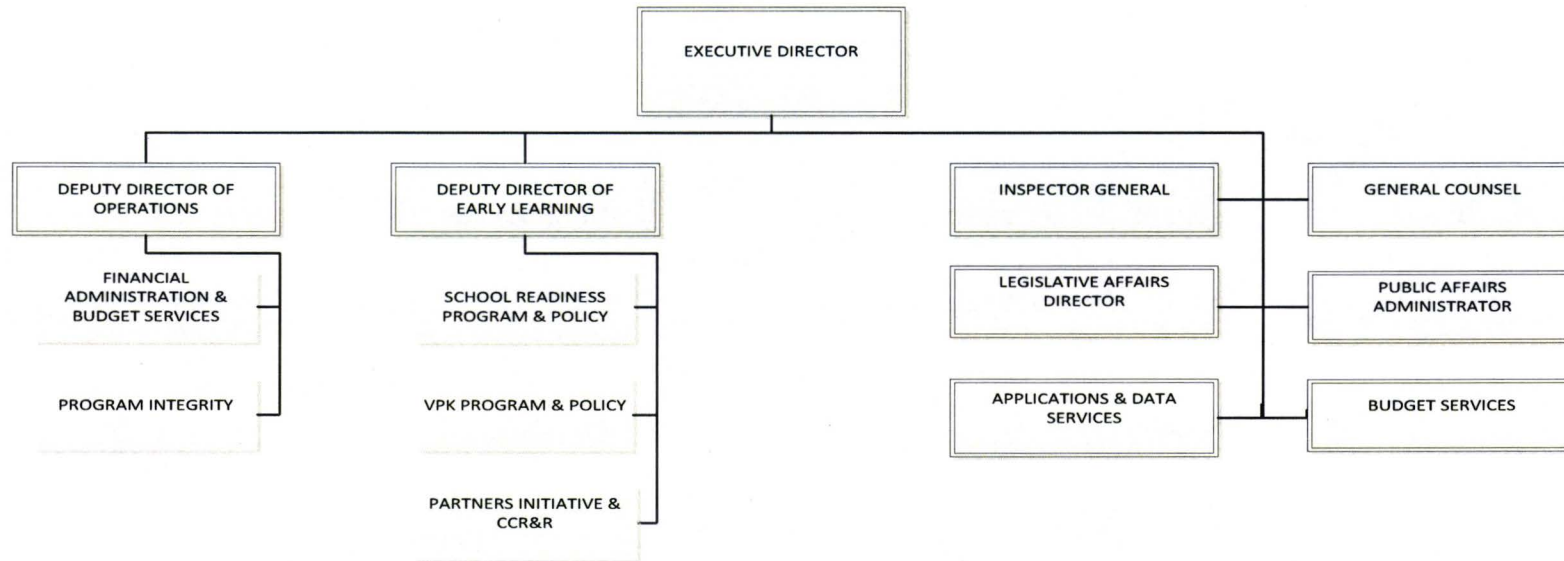
OFFICE OF
Early Learning

December 2012 LEARN EARLY. LEARN FOR LIFE.

Reorganizing for Excellence in Early Learning

Proposed 2013 Organizational Chart

FLORIDA DEPARTMENT OF EDUCATION
INDEPENDENT EDUCATION & PARENTAL CHOICE
OFFICE OF EARLY LEARNING



OFFICE OF

Early Learning

LEARN EARLY. LEARN FOR LIFE.

FTE: 100

9

Reorganizing for Excellence in Early Learning

2012 FTE	OEL Reorganization by Section	2013 FTE	Proposed 2014 FTE
18	Director's Office	16	16
8	Application and Data Services	15	17
10*	VPK Program and Policy	10	8
18	School Readiness Program and Policy	18	13
7	Partnership Initiatives and CCR&R	8	9
19	Financial Administration	21	18
27	Program Integrity/Monitoring	19	19
107*	Totals	107	100





Contact the Office of Early Learning:

Shan Goff, Executive
Director

Shan.Goff@oel.myflorida.com

850-717-8551

Elizabeth Moya, Director
of Legislative Affairs

Elizabeth.Moya@oel.myflorida.com

850-717-8662



OFFICE OF

Early Learning

LEARN EARLY. LEARN FOR LIFE.



Florida House of Representatives
Education Appropriations Subcommittee

October 9, 2013

Update on Teacher Salary Allocation

Florida Department of Education
Linda Champion



Teacher Salary Allocation

- Chapters 2013-40 and 2013-45, Laws of Florida
 - \$480,000,000 for salary increases in 2013-14
 - Classroom teachers, guidance counselors, social workers, psychologists, librarians, principals, and assistant principals
 - At least \$2,500 for “effective”
 - Up to \$3,500 for “highly effective”
 - Flexibility for school board-approved plan
 - Negotiated with collective bargaining units



District Implementation

Status	Number	Percentage
Completed Negotiations	13	19%
Ongoing Negotiations	52	78%
Impasse	1	1.5%
Negotiations Not Started	1	1.5%

Total Distributed Allocation: \$26,152,015

* Source: Teacher Salary Increase Allocation Survey data as of 10/2/13



Salary Allocation

(13 districts with completed plans)

Category	Average Amount	Percentage Increase
Instructional Staff – 13 districts	\$1,500 - \$2,900	2.30% - 6.80%
Administrators – 11 districts	\$450 - \$2,000	1.00% - 5.05%
Non-instructional Staff - 4 districts	\$80 - \$1,100	1.00% - 7.00%



Allocation Criteria

(13 districts with completed plans)

Criteria	Number	Districts
Performance	2	Taylor, Wakulla
Step Increases	4	Baker, Hendry, Jackson, Union
Combination Approach	3	Citrus, Manatee, Okaloosa
Across the Board	4	Calhoun, Gulf, Holmes, Leon