



Education Committee

Thursday, October 10, 2013

8:00 AM – 10:00 AM

102 HOB

Meeting Packet

Will Weatherford
Speaker

H. Marlene O'Toole
Chair



AGENDA

Education Committee

Thursday, October 10, 2013

8:00 a.m. – 10:00 a.m.

102 HOB

- I. Call to Order/Roll Call
- II. Opening Remarks
- III. Presentations on aspects of Florida's early learning system by Debby Russo, Director of Child Care Services in the Department of Children and Families and Shan Goff, Director, Office of Early Learning
- IV. Presentation on early childhood professional development by Don Pemberton and Abby Thorman, Lastinger Center for Learning at the University of Florida
- V. Closing Remarks and Adjournment



Rick Scott, Governor
Esther Jacobo, Interim Secretary



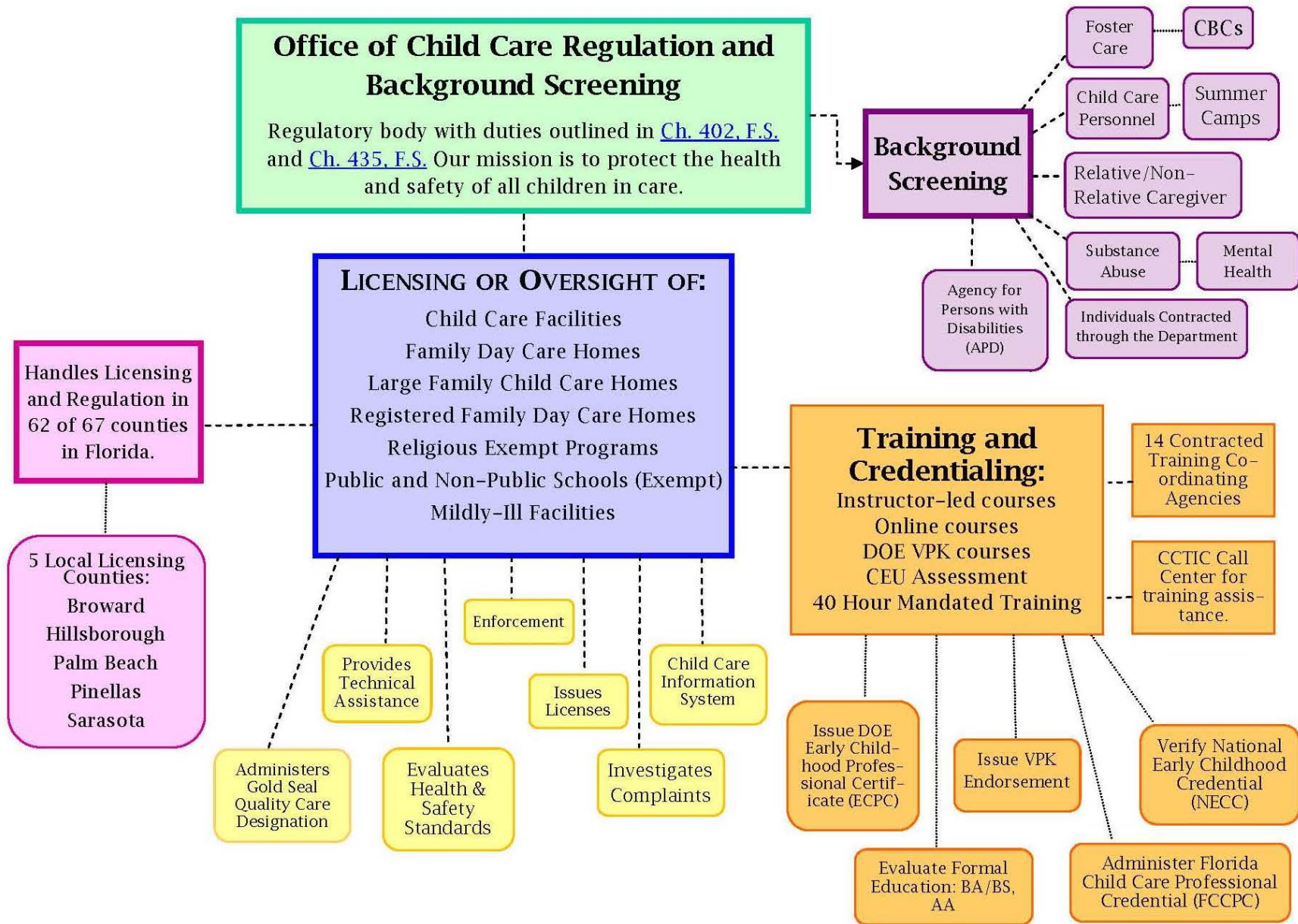
Child Care Regulation

House Education Committee
October 10, 2013

Presented by Deborah Russo, Director of Office of Child
Care Regulation and Background Screening

**Mission: Protect the Vulnerable, Promote Strong and Economically Self-Sufficient Families,
and Advance Personal and Family Recovery and Resiliency**

“To protect the health and safety of all children in care.”



CHILD CARE PROVIDER TYPES

**Child Care
Facilities**

Licensed

**Large Family
Child Care Home**

Licensed

**Family Day
Care Home**

**Voluntarily
Licensed***

**Family Day
Care Home**

Registered

**Religious
Exempt**

Exempt

**Public and Non-
Public Schools**

Exempt

**Informal
Child Care**

LOCAL LICENSING AUTHORITY

Broward

Hillsborough

Palm Beach

Pinellas

Sarasota

Ten additional counties require licensure of Family Day Care Homes by ordinance, including

- **Brevard**
 - **Clay**
 - **Duval**
- **Hernando**
- **Manatee**
- **Miami-Dade**
 - **Nassau**
 - **Pasco**
 - **Polk**
- **St. Johns**

PROVIDER COUNTS FROM DCF AND OEL

**Child Care
Facilities
(Licensed)**

6,784

SR: 5,677

(58%)

VPK: 4,981

(77%)

**Family Day
Care Home
(Licensed)**

2,941

SR: 1,941

(20%)

VPK: 58

(1%)

**Large Family Child
Care Home
(Licensed)**

429

SR: 267

(3%)

VPK: 53

(1%)

**Family Day
Care Home
(Registered)**

1,037

SR: 284

(3%)

VPK: N/A

**Religious
Exempt
(Exempt)**

455

SR: 177

(2%)

VPK: 160

(2%)

**Public and Non-
Public Schools
(Exempt)**

1,841

SR: 977

(10%)

VPK: 1,126

(18%)

**Informal Child
Care**

0

SR: 105

(1%)

VPK: N/A

***SR: FY12-13**

***VPK: PY12-13**

CHILDREN SERVED

Department of Children and Families

692,806

Of that,

222,817 are School Readiness and

174,200 are VPK

**SR: FY12-13 & VPK: PY12-13
Duplicated counts*

LICENSING STANDARDS

To ensure and protect the health, safety, sanitation and well-being of the children in care.

Child Care Facilities: s. 402.305, F.S.

Large Family Child Care Homes: s. 402.3131, F.S.

Family Day Care Homes (Licensed & Registered): s. 402.313, F.S.

Religious Exempt: s. 402.316, F.S.

Public & Non-Public Schools: s. 402.3025, F.S.

BROAD CATEGORIES OF HEALTH & SAFETY STANDARDS

Health and Safety Standards	Child Care Facility	Large Family Child Care Home	Licensed Family Day Care Home	Registered Family Day Care Home	Religious Exempt	Public/ Nonpublic Schools	Informal Provider
Licensure	✓	✓	✓				
Background Screening	✓	✓	✓	✓	✓	✓	✓ Level 1
Age Requirements	✓ (21)(16)	✓ (21)	✓ (18)				
Supervision	✓	✓	✓				
Transportation	✓	✓	✓				
Child Discipline	✓	✓	✓				
Access	✓	✓	✓				
Maintain Attendance	✓						
Planned Activities	✓	✓	✓				
Child Discipline	✓	✓	✓				
Physical Environment	✓	✓	✓				
Outdoor Play Area	✓	✓	✓				
Square footage/Space	✓	✓					
Cribs, Bedding and Linens	✓	✓	✓				
Diapering Standards	✓	✓	✓				
First Aid/CPR	✓	✓	✓				
Indoor/Outdoor Equipment	✓	✓	✓				
Immunizations/Physicals	✓	✓	✓	✓			
Fire Drills and Emergency Preparedness	✓	✓	✓				
Fire Inspections	✓	✓			✓	✓	
Credentials (Director/Staff)	✓ (DC/SC)	✓ (SC)					
Training	✓	✓	✓	✓			✓
Literacy Training	✓	✓	✓				
Food Hygiene/Nutrition	✓	✓	✓				
Enforcement	✓	✓	✓				
On-site Inspections	✓	✓	✓				
Self Attestation/Checklist				✓			

CLASS VIOLATIONS

Violation Level	Occurrence per Same Standard	Violation is Named	The Department SHALL	Also, the Department
Health/Immunization Violation	1	Technical Support	Technical Assistance	
	2	Technical Support	Formal Letter	
	3	Class III Violation of Standard # X	Fine in the amount of \$25 for each violation.	
	4	Class III Violation of Standard # X	Fine in the amount of \$30 for each violation.	
	5	Class III Violation of Standard # X	Fine in the amount of \$40 per day each violation.	
	6 and subsequent	Class III Violation of Standard # X	License on probation for a period not to exceed 6 months.	Shall fine \$50 per day for each violation.
Class III	1 st	Technical Support	Technical Assistance	
	2 nd	Technical Support	Formal Letter	
	3 rd	Class III Violation of Standard # X	Fine in the amount of \$25 for each violation.	
	4 th	Class III Violation of Standard # X	Fine in the amount of \$30 per day for each violation.	
	5 th	Class III Violation of Standard # X	License on probation for a period not to exceed 6 months.	Shall fine \$40 per day for each violation.
	6 th and subsequent	Class III Violation of Standard # X	Suspend, deny or revoke license.	Shall fine \$50 per day for each violation.
Class II	1	Technical Support	Formal Letter	
	2	Class II Violation of Standard # X	Fine in the amount of \$50 for each violation.	
	3	Class II Violation of Standard # X	Fine in the amount of \$60 per day for each violation.	
	4	Class II Violation of Standard # X	License on probation status for a period not to exceed 6 months.	Shall fine \$75 per day for each violation.
	5 and subsequent	Class II Violation of Standard # X	Suspend, deny or revoke license.	Shall fine \$100 per day for each violation.
Class I	1 st and 2 nd	Class I Violation of Standard # X	Upon applying the factors in s. 402.302(1)(b), F.S., fine not less than \$100 nor more than \$500 per day.	May impose other disciplinary sanction in addition to the fine.
	3 rd and subsequent (in any standard)	Class I Violation of Standard # X	Suspend, deny or revoke license.	May , upon applying the factors in s. 402.310, F.S., fine not less than \$100 nor more than \$500 per day for each violation and/or any other disciplinary action.

TRAINING & CREDENTIALING

Child Care Facilities (Licensed)

40 hours
In-Service
Literacy
Director Credential
VPK Endorsement
Staff Credential (1:20)
CPR/First Aid

Large Family Child Care Home (Licensed)

40 hours
In-Service
Literacy
Director Credential
VPK Endorsement
Staff Credential
CPR/First Aid

Family Day Care Home (Licensed)

30 hours
In-Service
Literacy
Director Credential
VPK Endorsement
CPR/First Aid

Family Day Care Home (Registered)

30 hours
In-Service
Literacy

Religious Exempt (Exempt)

Director Credential
VPK Endorsement

Public and Non- Public Schools (Exempt)

Director Credential
VPK Endorsement
Staff Credential (or
higher)

Informal Child Care

6 hours

CONTACT INFORMATION

- Deborah Russo, Director Office of Child Care Regulation and Background Screening, Department of Children and Families

850-488-4900

www.myflfamilies.com/childcare

Office of Early Learning

Who is Eligible to Provide School Readiness Services?

Programs must

- Meet program eligibility requirements (licensed child care facility, family child care home, public/non-public school, faith-based, before/after school, or informal)
- Meet program standards (teacher to child ratio, health & safety)
- Use a developmentally appropriate curriculum (with character development component)
- Maintain workers' compensation and general liability insurance



Office of Early Learning

Who is Eligible to Provide VPK?

Two Program Options: School year (540 hours) or Summer (300 hours)

Programs must

- Meet program eligibility requirements (licensed, recognized accreditation, Gold Seal)
- Employ staff that meet instructor qualifications (e.g., VPK Director Endorsement*, certified teachers/summer program)
- Meet program standards (class-size, teacher to child ratio)
- Use a developmentally appropriate curriculum with focus on emergent literacy
- Maintain Workers' Compensation and General Liability Insurance

*private child care providers



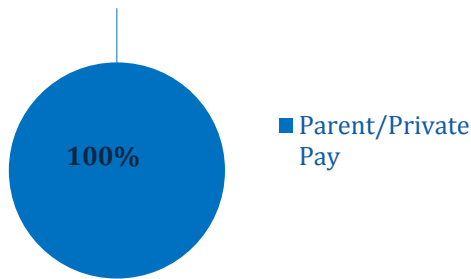
OFFICE OF
Early Learning

LEARN EARLY. LEARN FOR LIFE.

Office of Early Learning

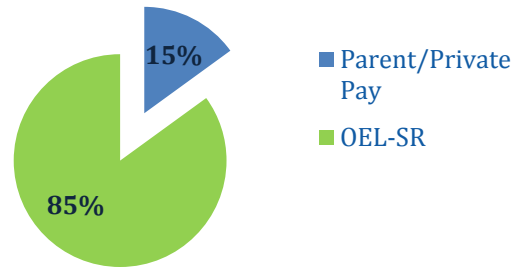
Payment Options: Full-Day Child Care

Private Pay Child Care



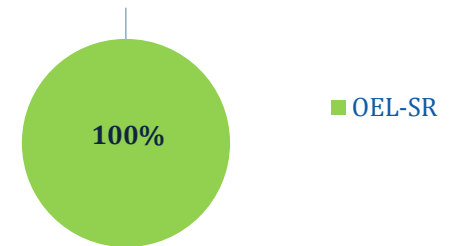
This chart represents a payment option where the parents pay for the entire day.

School Readiness



This chart represents a payment option in the School Readiness Program where the parent pays a co-payment.

School Readiness (Parent Co-pay Waived)



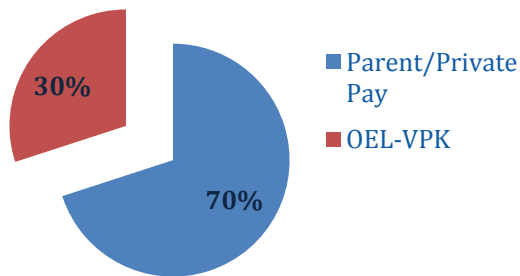
This chart represents a payment option in the School Readiness program where the parent co-payment is waived (example, at-risk child; locally determined).



Office of Early Learning

Payment Options: VPK Program

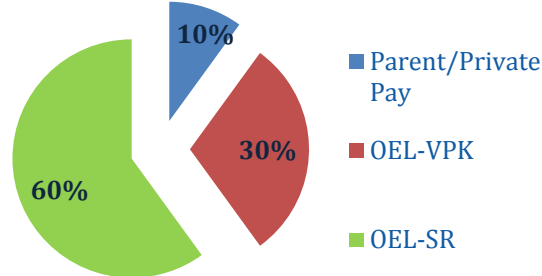
VPK



This chart represents a payment option in the VPK program where the parents pay for the remainder of the day.

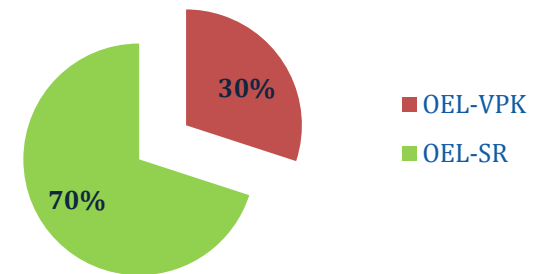
Note: Some children only attend the VPK portion of the day.

VPK with School Readiness Wrap



This chart represents a payment option for a child enrolled in the VPK program who also qualifies for the School Readiness Program for the remainder of the day. The parent is required to pay a percentage of the cost of the wrap around care.

VPK With School Readiness Wrap (Parent Co-Pay Waived)



This chart represents a payment option for a child enrolled in the VPK program who also qualifies for the School Readiness Program for the remainder of the day and the parent co-pay is waived (example, at-risk child, locally determined).





Office of Early Learning

Shan Goff, Executive
Director

Shan.Goff@oel.myflorida.com
850-717-8551

Elizabeth Moya, Director of
Legislative Affairs

Elizabeth.Moya@oel.myflorida.com
850-717-8662



OFFICE OF
Early Learning

LEARN EARLY. LEARN FOR LIFE.